

REVIEW

KCNMA1-linked channelopathy

Cole S. Bailey¹, Hans J. Moldenhauer¹, Su Mi Park¹, Sotirios Keros², and Andrea L. Meredith¹

KCNMA1 encodes the pore-forming α subunit of the “Big K⁺” (BK) large conductance calcium and voltage-activated K⁺ channel. BK channels are widely distributed across tissues, including both excitable and nonexcitable cells. Expression levels are highest in brain and muscle, where BK channels are critical regulators of neuronal excitability and muscle contractility. A global deletion in mouse (*KCNMA1*^{-/-}) is viable but exhibits pathophysiology in many organ systems. Yet despite the important roles in animal models, the consequences of dysfunctional BK channels in humans are not well characterized. Here, we summarize 16 rare *KCNMA1* mutations identified in 37 patients dating back to 2005, with an array of clinically defined pathological phenotypes collectively referred to as “*KCNMA1*-linked channelopathy.” These mutations encompass gain-of-function (GOF) and loss-of-function (LOF) alterations in BK channel activity, as well as several variants of unknown significance (VUS). Human *KCNMA1* mutations are primarily associated with neurological conditions, including seizures, movement disorders, developmental delay, and intellectual disability. Due to the recent identification of additional patients, the spectrum of symptoms associated with *KCNMA1* mutations has expanded but remains primarily defined by brain and muscle dysfunction. Emerging evidence suggests the functional BK channel alterations produced by different *KCNMA1* alleles may associate with semi-distinct patient symptoms, such as paroxysmal nonkinesigenic dyskinesia (PNKD) with GOF and ataxia with LOF. However, due to the de novo origins for the majority of *KCNMA1* mutations identified to date and the phenotypic variability exhibited by patients, additional evidence is required to establish causality in most cases. The symptomatic picture developing from patients with *KCNMA1*-linked channelopathy highlights the importance of better understanding the roles BK channels play in regulating cell excitability. Establishing causality between *KCNMA1*-linked BK channel dysfunction and specific patient symptoms may reveal new treatment approaches with the potential to increase therapeutic efficacy over current standard regimens.

Introduction

Ion channelopathies

Ion channels are ubiquitously expressed throughout the body and perform key membrane transport processes crucial to normal physiological function. Pathogenic alterations to ion channel activity can disrupt homeostatic and physiological functions leading to disorders such as hemiplegic migraines, epilepsy, or cardiac arrhythmias, collectively referred to as “channelopathies” (Brenner and Wilcox, 2012; Kim, 2014; Meredith, 2015). Channelopathies are rare monogenetic disorders stemming from inherited or de novo mutations in genes encoding the functional components of ion channels. Advancements in whole exome sequencing (WES) have contributed to a growing list of diagnosable monogenetic channelopathies (Kim, 2014), yet the molecular basis for these genetic mutations and how they produce clinical phenotypes are not fully established in many cases. Current understandings of channelopathies are limited by several factors, such as deficiencies in (a) the direct

evidence for causality due to a very limited number of patients and lack of genetic pedigree analysis, (b) the functional data for the classification of mutant channel properties, and (c) the tissue loci and nature of aberrant excitability linked to abnormal patient phenotypes. This review will focus on one channelopathy involving the large conductance Ca²⁺ and voltage-activated K⁺ (BK, K_{Ca1.1}) channel, encoded by *KCNMA1*. The hallmark clinical presentation of *KCNMA1*-linked channelopathy is neurological dysfunction, including seizures, movement disorders, developmental delay, and intellectual disability.

BK channel structure

The *KCNMA1* gene, located on human chromosome 10q22.3, produces the pore-forming α -subunit of the BK channel (Dworetzky et al., 1994; Pallanck and Ganetzky, 1994; McCobb et al., 1995). BK channels, named for their “Big K⁺” conductance (>100 pS), are members of the voltage-gated K⁺ channel family and mediate K⁺ efflux from excitable and non-excitable cells

¹Dept. of Physiology, University of Maryland School of Medicine, Baltimore, MD; ²Department of Pediatrics, University of South Dakota Sanford School of Medicine, Sioux Falls, SD.

Correspondence to Andrea L. Meredith: ameredith@som.umaryland.edu.

© 2019 Bailey et al. This article is distributed under the terms of an Attribution–Noncommercial–Share Alike–No Mirror Sites license for the first six months after the publication date (see <http://www.rupress.org/terms/>). After six months it is available under a Creative Commons License (Attribution–Noncommercial–Share Alike 4.0 International license, as described at <https://creativecommons.org/licenses/by-nc-sa/4.0/>).

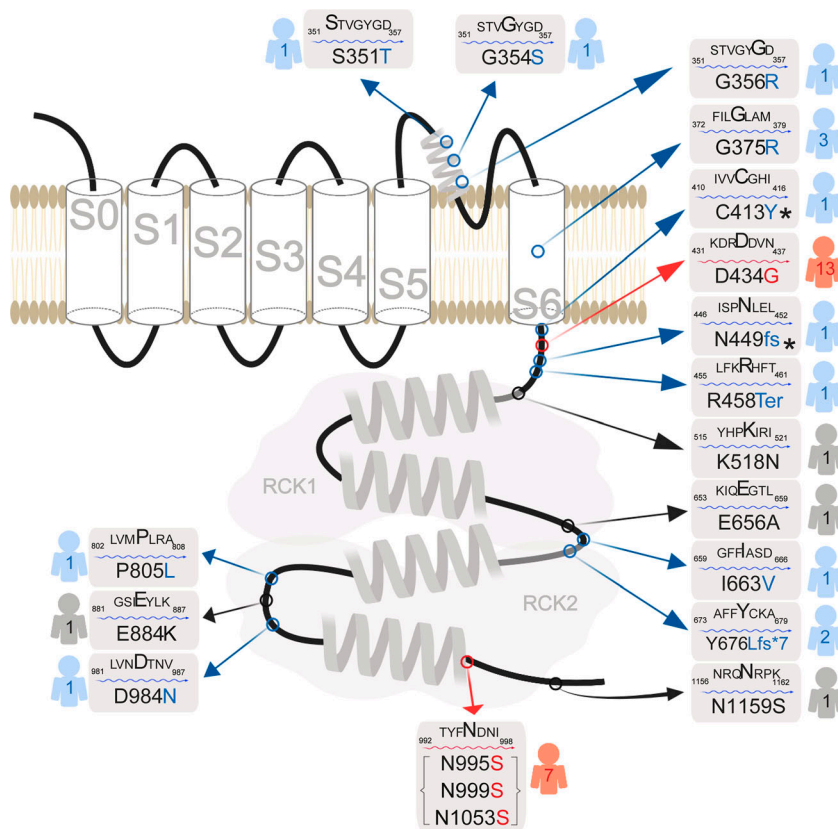


Figure 1. Human *KCNMA1* mutations. Schematic of the *KCNMA1* gene product, the α -subunit of the BK channel (GenBank accession no. NM_002247.3). The voltage-sensitive pore-forming region of the BK channel is comprised of transmembrane domains S0–S6, while the intracellular gating ring contains the two Ca^{2+} binding sites in the RCK1 and RCK2 domains. Red indicates GOF mutations ($n = 2$), blue indicates LOF or putative LOF mutations ($n = 11$), and black indicates putative benign mutations ($n = 3$) or VUS ($n = 1$). *C413Y/N499fs is a double mutation harbored by a single patient. Numbers to the right or left of each mutation indicate the total number of patients carrying each mutation reported in published studies. N995S, N999S, and N1053S are the same amino acid substitution, but are reported in the literature using three different reference sequencing number schemes.

(Latorre and Miller, 1983; Neyton and Miller, 1988). BK channels assemble as homotetramers of the *KCNMA1* gene product. Each α -subunit consists of seven transmembrane domains (S0–S6), and a large intracellular C-terminus (Fig. 1). The extracellular N-terminus and presence of the S0 transmembrane segment differs between BK and other voltage-gated K^+ channels and confers interactions with accessory proteins (β and γ subunits; Wallner et al., 1996; Morrow et al., 2006; Yan and Aldrich, 2010, 2012). The S1–S4 segments contain positively charged residues and constitute the voltage sensing domain, while the S5–S6 segments form the pore domain, which houses the highly K^+ -selective conduction pathway (Meera et al., 1997; Stefani et al., 1997; Horrigan et al., 1999; Horrigan and Aldrich, 2002; Yang et al., 2015). The intracellular C-terminus of the BK channel encompasses the gating ring, a structure comprised of two regulators of K^+ conductance (RCK) domains. RCK1 and RCK2 each contain two distinct high-affinity Ca^{2+} binding sites, mediating the allosteric gating of BK channels (Xia et al., 2002; Wang and Sigworth, 2009; Lee and Cui, 2010; Yuan et al., 2010, 2011; Zhang et al., 2010). The human BK channel structure was determined in 2010 (Yuan et al., 2010), providing a basis for understanding the location of specific residues, such as mutations, with respect to functional domains.

Voltage and calcium regulation of BK channel activity

Multiple activation mechanisms are involved in opening the channels in vivo (Hou et al., 2009). Under physiological conditions in excitable cells, the BK channel activation requires both membrane depolarization and an increase in intracellular Ca^{2+}

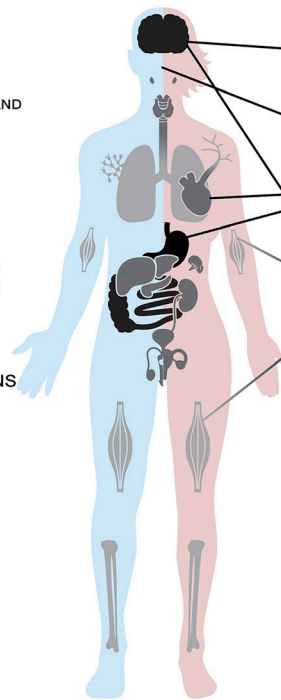
to micromolar levels for activation (Yang et al., 2015). These high concentrations of Ca^{2+} are attained in local microdomains through tight functional coupling with voltage-gated Ca^{2+} channels or channels that release Ca^{2+} from intracellular stores (Fakler and Adelman, 2008). Different tissues exhibit BK currents of varying voltage and Ca^{2+} -dependent activation properties, underlying the complex roles for BK channels in regulating excitability. This cell and tissue-specific regulation is achieved via extensive alternative splicing of *KCNMA1* transcripts, assembly with modulatory β - and γ -regulatory subunits, and a variety of post-translational modifications (Kyle and Braun, 2014; Latorre et al., 2017; Gonzalez-Perez and Lingle, 2019). These mechanisms work together to tailor the voltage and Ca^{2+} dependence of channel activation, as well as the kinetics of activation and deactivation gating, for the cell-specific function of BK channels in excitability or K^+ transport.

Tissue distribution and links to human pathophysiology

In humans, BK channels are widely expressed in the body including nervous, muscular, skeletal, endocrine, cardiovascular, digestive, urinary, and reproductive systems (Fig. 2; Pallotta et al., 1981; Adams et al., 1982; Becker et al., 1995; McCobb et al., 1995; Hirukawa et al., 2008; Cui et al., 2009; Fagerberg et al., 2014; Contet et al., 2016; Latorre et al., 2017; Gonzalez-Perez and Lingle, 2019). Prior to the identification of *KCNMA1*-linked channelopathy patients, changes in BK channel expression or activity had been implicated in human studies of erectile dysfunction, overactive bladder, hypertension, and premature uterine contraction during pregnancy (Christ et al., 2001, 2009; Melman et al., 2007;

TISSUES WITH BK CHANNEL EXPRESSION

BRAIN (CNS)
 SALIVARY GLANDS
 NEUROENDOCRINE
 (THYROID, PARATHYROID AND ADRENAL)
 TRACHEA & LUNGS
 LYMPH NODES
 VASCULATURE
 HEART
 GI TRACT
 SPLEEN (IMMUNE SYSTEM)
 LIVER & GALLBLADDER
 PANCREAS
 KIDNEYS
 BLADDER
 REPRODUCTIVE ORGANS
 (PROSTATE, CORPUS CAVERNOSUM, TESTES OVARIES, UTERUS)
 SKELETAL MUSCLE
 BONE



KCNMA1-LINKED CHANNELOPATHY PHENOTYPES

EPILEPSY, CEREBELLAR ATROPHY, DEVELOPMENTAL DELAY, INTELLECTUAL DISABILITY, AND SENSORY IMPAIRMENT
 FACIAL DYSMORPHISMS
 VISCERAL MALFORMATIONS
 PNKD, ATAXIA, AXIAL HYPOTONIA, AND TREMOR

Figure 2. BK channel expression in human tissues and prominent phenotypes reported in patients with *KCNMA1*-linked channelopathy. Major tissues or systems expressing BK channels are depicted in black (high relative expression), gray (medium), and light gray (low). Organs demonstrating high levels of BK channel expression include the CNS (olfactory system, neocortex, basal ganglia, hippocampus, thalamus, habenula and its tract to the interpeduncular nucleus in the midbrain, cerebellum, vestibular nuclei in the hindbrain, and spinal cord), gastrointestinal tract (stomach, small intestine, and colon), and reproductive organs (corpus cavernosum, prostate, testes, ovaries, and uterus). Organs demonstrating medium BK channel expression include salivary glands, neuroendocrine glands (thyroid, parathyroid, adrenal), heart, urinary bladder, liver and gallbladder, kidneys, and spleen/immune system. Organs demonstrating low levels of BK channel include lungs, lymph nodes, vasculature, skeletal muscle, and bone. Data on expression levels were derived from the Human Protein Atlas v18.1 (<https://www.proteinatlas.org>; Uhlén et al., 2015), the NCBI Gene Database (<https://www.ncbi.nlm.nih.gov>), and published reports (Dworetzky et al., 1994; McCobb et al., 1995; Brenner et al., 2000).

Tomás et al., 2008; Grimm and Sansom, 2010; Yang et al., 2013; Li et al., 2014). Moreover, several nonsynonymous single nucleotide polymorphisms (SNPs) in *KCNMA1* and genes encoding BK-specific auxiliary β subunits (*KCNMB1-4*) were also linked to human disorders or disease risk, including autism, hypertension and cardiovascular function, and asthma (Gollasch et al., 2002; Schuckit et al., 2005; Laumonier et al., 2006; Han et al., 2013). Despite these studies implicating BK channel function in several pathological conditions, genetic linkage and analysis of human tissues have revealed only a limited picture of what is known about BK channel roles in vivo. Extensive investigations in animal models, which are more accessible to the interrogation of specific cell types and tissues, have provided a more complete assessment of the various roles for BK channels in physiology and pathophysiology. Although neurological and muscle phenotypes are well represented, BK channel function in rodents is more broadly required for a panoply of organ functions that parallels their wide expression across tissues (Fig. 3). Taken together, these animal studies detail a greater potential for wide-ranging pathophysiological dysfunction in patients carrying mutations in *KCNMA1*.

KCNMA1 patient mutations

16 *KCNMA1* mutations in 37 symptomatic patients have been reported in the literature to date (Fig. 1). Functional classifications into GOF and LOF effects on channel properties have been based on expression of BK channel complementary DNAs harboring the patient mutations in nonexcitable heterologous

cell lines (Table 1 and Supplemental text). From these studies, two mutations have been shown to confer GOF properties to BK channels: D434G and N995S (also referred to as N999S or N1053S; Du et al., 2005; Zhang et al., 2015; Li et al., 2018; Plante et al., 2019). 10 mutations have been classified as LOF (S351Y, G354S, G356R, G375R, C413Y/N449fs, I663V, P805L, and D984N; Carvalho-de-Souza et al., 2016; Liang et al., 2019) or putative LOF (premature truncation mutations: Y676Lfs*7 and Arg458Ter; Tabarki et al., 2016; Yeşil et al., 2018). The remaining mutations have not yet been conclusively defined with respect to channel properties (variant of unknown significance, VUS; E884K; Zhang et al., 2015) or have not been demonstrated to produce changes in channel function (K518N, E656A, and N1159S; Li et al., 2018).

The majority of the mutations are de novo variants, and patients are heterozygous (Fig. 1). Since BK channels are comprised of tetramers of the *KCNMA1* gene product, this presents the potential for mitigation of mutant effects by coassembly with WT subunits in heterozygous patients. However, it is not yet known whether tetramers are actually formed between WT and mutant subunits in patients with one normal and one mutant allele, or how the interaction between these subunits would affect BK channel properties. It is also not well studied how the native regulatory processes that set channel function in vivo would combine with the mutation to affect channel properties. It is also possible that some previously established GOF or LOF classifications could change under different experimental conditions than those initially tested. *KCNMA1* patient mutations that have been characterized in at least one standard condition

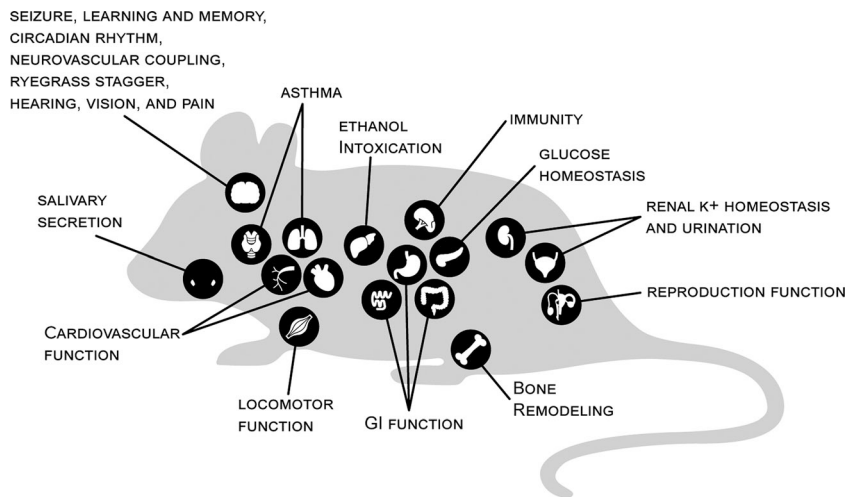


Figure 3. BK channel dysfunction by organ and functional system in rodent models. BK channel knockout mice (*KCNMA1*^{-/-}) show a wider range of pathophysiology compared with human *KCNMA1* patients with LOF mutations. Such findings are consistent with the extensive distribution of BK channels across tissues. Key organ and functional systems disrupted by BK channel dysfunction in mouse models are indicated. BK channel activity was required for several aspects of neurological operations in rodent models, such as regulation of neuronal excitability (Jin et al., 2000; Faber and Sah, 2003; Brenner et al., 2005; Shruti et al., 2008; Sheehan et al., 2009), locomotor function (Meredith et al., 2004; Sausbier et al., 2004; Chen et al., 2010), circadian rhythm (Meredith et al., 2006; Kent and Meredith, 2008; Montgomery et al., 2013; White et al., 2015; Whitt et al., 2016), learning and memory (Typlt et al., 2013b), vision (Henne and Jeserich, 2004; Grimes et al., 2009; Tanimoto et al., 2012), hearing and vestibular reflexes (Pyott et al., 2007; Maison et al.,

2013; Rohmann et al., 2015; Pyott and Duncan, 2016; Nelson et al., 2017), and neurovascular coupling (Filosa et al., 2006; Girouard et al., 2010). In addition to neurological roles, rodent models further revealed that BK channels are required for regulation of cardiovascular function (Sausbier et al., 2005; Imlach et al., 2010; Lai et al., 2014; Nagaraj et al., 2016), airway control (Sausbier et al., 2007; Goldklang et al., 2013; Manzanares et al., 2014), urination (Meredith et al., 2004; Thorneo et al., 2005; Brown et al., 2008; Sprossmann et al., 2009), glucose homeostasis (Houamed et al., 2010; Düfer et al., 2011), renal K⁺ homeostasis (Liu et al., 2007; Rieg et al., 2007), reproductive function (Werner et al., 2005, 2008; Li et al., 2014), ethanol intoxication (Martin et al., 2004; Pietrzykowski et al., 2008), gastrointestinal function (Sausbier et al., 2006a; Sørensen et al., 2008), body weight (Halm et al., 2017), pain (Hayashi et al., 2016), immunity (Essin et al., 2009), bone remodeling (Sausbier et al., 2011; Hei et al., 2016), and salivary secretion (Maruyama et al., 1983; Stummann et al., 2003).

are presented in Table 1 and further described in the Supplemental text.

Neuronal mechanisms of BK channel dysfunction

The mechanisms by which *KCNMA1* mutations alter BK channel activity to cause patient symptoms is still an open question. In the central nervous system (CNS), BK channels play an important role in neuronal excitability, passing outward K⁺ current

upon membrane depolarization and increased intracellular Ca²⁺ during the action potential, leading to hyperpolarization of the membrane and decreased excitability (Hille, 2001). BK current shapes action potential waveforms by mediating the repolarization and afterhyperpolarization (AHP) phases (Shao et al., 1999; Faber and Sah, 2002; Gu et al., 2007; Ly et al., 2011; Contet et al., 2016). In the majority of neuronal and muscle contexts where the channels are expressed, activation of BK

Table 1. *KCNMA1* mutation effects on BK channel function

Mutation	BK current properties	Mechanism
D434G	Increased current	G-V shift to hyperpolarized potentials, increased open probability, faster activation, slower deactivation, increased Ca ²⁺ sensitivity (Du et al., 2005; Díez-Sampedro et al., 2006; Wang et al., 2009; Yang et al., 2010; Plante et al., 2019)
N995/999/1053S	Increased current	G-V shift to hyperpolarized potentials, increased open probability, faster activation, slower deactivation, Ca ²⁺ -independent mechanism (Li et al., 2018; Plante et al., 2019)
S351Y, G356R, G375R, N449fs*, I663V	No current	Not determined (Liang et al., 2019)
C413Y, P805L	Reduced current	G-V shift to depolarized potentials, decreased expression (P805L; Liang et al., 2019)
D984N	Reduced current	Not determined (Liang et al., 2019)
G354S	Reduced current	Slower activation (Carvalho-de-Souza et al., 2016)
R458Ter, Y676Lfs*7	Not determined	Putative truncations (Tabarki et al., 2016; Yeşil et al., 2018)
K518N, E656A, N1195S	No current difference	Li et al., 2018
E884K	Not determined	Zhang et al., 2015

Dark gray, GOF mutations; light gray, LOF mutations; no shading, VUS. Full descriptions of experimental investigations for mutant channel properties are contained in Supplemental text. The N995S/N999S/N1053S mutation is reported in the literature using three different reference sequence numbering schemes but constitutes the same residue substitution (Figure 1). In this review, this mutation will be referred to by the numbering scheme in the original publication for the data being discussed.

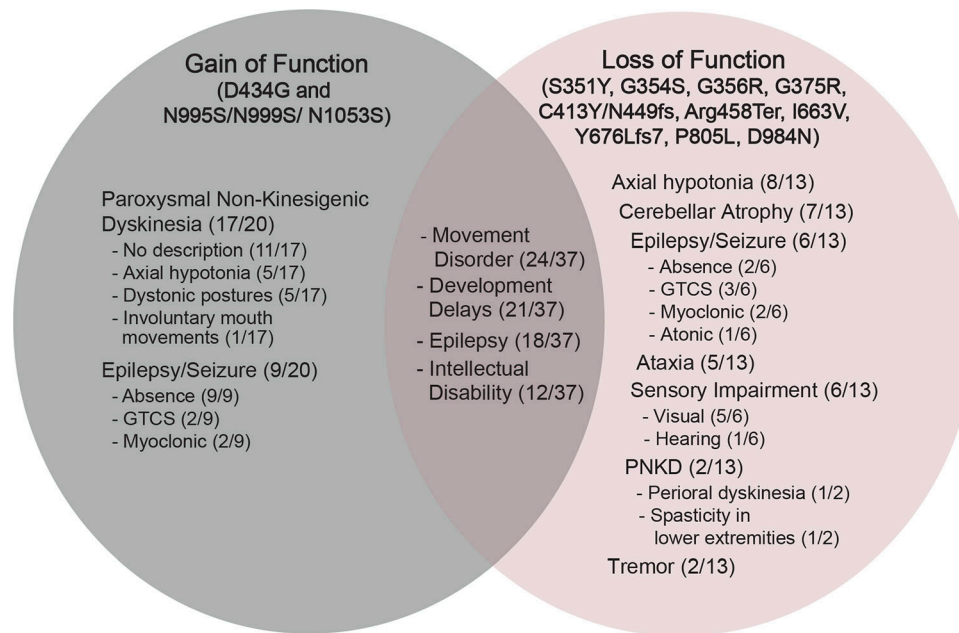


Figure 4. Patient phenotypes for GOF versus LOF *KCNMA1* alleles. Summary of the main phenotypes exhibited by *KCNMA1*-linked channelopathy patients: seizure, movement disorder, neurodevelopment, and intellectual disability. The denominator is the total number of patients included in each mutation group, and the numerator is the number of patients reported with the particular phenotype. The intersection includes shared symptoms among all patients ($n = 37$) identified with any *KCNMA1* mutation ($n = 16$) reported in this review. Additional subtype descriptors for PNKD, epilepsy, and sensory impairment are annotated. 11/20 of GOF patients had no additional description for their PNKD symptoms in the published reports.

current reduces neuronal firing rates, presynaptic neurotransmitter release, or muscle contraction or tone (Jaggar et al., 2000; Contet et al., 2016; Tricarico and Mele, 2017). In neurons, this decrease in firing is predominantly due to the contribution of BK current to the AHP phase of the action potential (Storm, 1987; Contet et al., 2016). In cerebellar Purkinje and dentate gyrus (DG) granule neurons, cell types which have been linked to central neurological phenotypes, the β_4 subunit facilitates the suppressive role for BK channels in neuronal firing. β_4 subunits slow BK current activation, shifting their activation to the AHP phase (Brenner et al., 2005; Womack et al., 2009; Petrik et al., 2011; Benton et al., 2013). BK channel activation also reduces excitatory synaptic activity at neuromuscular junctions and in central neurons (Robitaille et al., 1993; Raffaelli et al., 2004). In smooth muscle cells, BK channels hyperpolarize the membrane potential, which in turn decreases Ca^{2+} influx through voltage-gated Ca^{2+} channels and promotes smooth muscle relaxation (Jaggar et al., 2000). These studies suggest that LOF in BK channel activity would broadly produce hyperexcitability, such as that resulting in seizure. Consistent with this, at least half of the patients with putative LOF *KCNMA1* mutations have seizures of some type (Fig. 4).

GOF *KCNMA1* patient mutations are also clearly associated with seizure, raising the possibility that changes in BK channel activity in both directions could alter the balance of excitation and inhibition in the brain. Underlying the potential for bidirectional effects on excitability, BK channels are expressed in both excitatory and inhibitory neurons, and the effects of BK current on firing can vary by neuron type (Contet et al., 2016). Activation of BK current can both decrease and increase

neuronal firing rates (Montgomery and Meredith, 2012), a paradox that can be resolved by understanding the voltage and Ca^{2+} dependence and gating kinetics of the channels in a specific membrane and cellular context. Predicting the effect of BK channel activation on action potential frequency, for example, requires knowledge of the activation, inactivation, and deactivation properties for the BK channels, as well as their subcellular localization and interaction with other ionic currents in that cell (Jaffe et al., 2011; Ly et al., 2011; Montgomery and Meredith, 2012; Bock and Stuart, 2016; Contet et al., 2016). The intrinsic gating properties, in turn, are regulated by the subunit composition of the BK channel complex: the α , β , and γ subunits of the BK channel and its associated Ca^{2+} source (Berkefeld and Fakler, 2008; Latorre et al., 2017). A pro-excitatory effect of BK channel activation is revealed by BK antagonists that decrease neuronal firing or plateau potentials (Solaro et al., 1995; Jin et al., 2000; Van Goor et al., 2001; Sausbier et al., 2004; Gu et al., 2007; Bell et al., 2008) or reduce sinoatrial node firing and heart rate (Lai et al., 2014), an opposite effect from the typical result of inhibiting BK channels in most excitable cells. Furthermore, BK channel inhibition has been reported to exert anticonvulsant, rather than epileptogenic, effects in picrotoxin and pentylene-tetrazole (PTZ) mouse seizure models (Sheehan et al., 2009).

The mechanisms underlying the pro-excitatory effects could simply stem from the increased BK current produced by GOF channels hyperpolarizing the membrane of inhibitory neurons. On the other hand, one property correlated with pro-excitatory BK currents is fast activation. More rapid BK current activation directly increases neuronal firing rates by leading to faster repolarization of the action potential (Jaffe et al., 2011; Ly et al.,

2011; Montgomery and Meredith, 2012; Contet et al., 2016), an effect that could link GOF channels to hyperexcitation and increased firing in excitatory neurons. In addition, rapidly activating BK currents contribute to the fast phase of the AHP, facilitating enhanced Na_v channel recovery from inactivation and decreased activation of other K^+ currents (Van Goor et al., 2001; Gu et al., 2007; Gittis et al., 2010; Wang et al., 2014). Thus, rather than strictly hyperpolarizing membranes due to increased BK current, mutations such as D434G and N995S/N999S/N1053S, which activate more rapidly than WT channels (Du et al., 2005; Wang et al., 2009; Yang et al., 2010; Li et al., 2018; Plante et al., 2019), may be capable of directly increasing action potential firing. Thus, the bidirectional and cell-specific effects of BK channels on neuronal excitability suggests that *KCNMA1* mutation-linked dysfunction could disrupt neuronal circuitry and provoke pathological symptoms via multiple potential mechanisms.

KCNMA1-linked channelopathy and the spectrum of patient phenotypes

The clinical symptoms of patients with *KCNMA1*-linked channelopathy have not been comprehensively defined but are principally characterized by seizures and movement disorders. Of the 16 *KCNMA1* mutations reported in the literature to date, 4 mutations have been identified in more than one patient (Fig. 1). Comparison of these cases suggests that patients sharing the same mutation do exhibit similar and/or overlapping neurological and neuromuscular phenotypes, in addition to distinct symptoms. Particularly with the de novo mutations, this provides evidence for the causative nature of the mutations in patient symptoms. The evidence for symptomatic similarities by mutation is summarized in the following.

The D434G *KCNMA1* mutation was identified in 13 members of a large family with symptoms of a coexistent syndrome of generalized epilepsy and paroxysmal dyskinesia (Du et al., 2005). Within this group, seven patients developed PNKD, one patient developed epilepsy, and five patients developed both symptoms (Du et al., 2005). These clinical findings were the first to link *KCNMA1* to disease in humans and provided prima facie confirmation of the BK channel's extensive involvement in CNS function.

The N1053S mutation (also called N995S or N999S) has been identified in seven unrelated patients from around the world (Zhang et al., 2015; Wang et al., 2017; Li et al., 2018; Heim et al., 2019) who share similar symptoms with the D434G patients. Of these patients, four developed early onset PNKD, two developed epileptic seizures, and one patient developed both symptoms. In addition, all seven patients were reported to have developmental delays, three patients had intellectual disability, and one patient had other symptoms involving CNS dysfunction, potentially expanding the neurological phenotypes associated with this channelopathy. The symptoms associated with D434G and N1053S mutations constitute the description of phenotype MIM #609446 ("PKND3") provided by the Online Mendelian Inheritance in Man (OMIM) database (<https://omim.org>).

The Y676Lfs*7 mutation was identified in two siblings from a consanguineous family (Tabarki et al., 2016). Both patients were reported to have the same symptoms starting at a young age which included epileptic seizures, severe developmental delay, and nonprogressive cerebellar atrophy (Tabarki et al., 2016). These two patient cases constitute the description of phenotype MIM #617643 provided by the OMIM database. While seizure and developmental delay are shared phenotypes with D434G and N995S/N999S/N1053S, cerebellar atrophy without paroxysmal dyskinesia is a distinct phenotype and adds to the variability of neurological symptoms associated with this channelopathy.

The final mutation reported in the literature that is shared by multiple patients is G375R (Liang et al., 2019). This mutation was identified in three unrelated patients who experienced overlapping and heterogenous symptoms. All three patients were reported to have a multiple malformation syndrome characterized by facial dysmorphisms, visceral malformations, development delay, intellectual disability, and axial hypotonia (Liang et al., 2019). Additionally, two of the three patients developed epileptic seizures and one patient had mild cerebral and cerebellar atrophy (Liang et al., 2019). This mutation is associated with the most distinct clinical findings relative to the other three mutations but still demonstrates some phenotypic overlap with the previous mutations regarding neurological and neuromuscular dysfunction.

Of these four *KCNMA1* mutations, D434G exhibited autosomal dominant inheritance and was the only mutation identified in patients from successive generations of a pedigree (Du et al., 2005). Y676Lfs*7 demonstrated autosomal recessive inheritance and was identified in a single generation of a pedigree (Tabarki et al., 2016). These heritable mutations produced very similar symptoms in affected family members, suggesting a causal role. The remaining two mutations shared by multiple patients were de novo variants (N995S/N999S/N1053S and G375R). In these cases, clinical similarities between patients sharing the same mutations has suggested causality in the absence of comprehensive pedigrees. As a result of the confidence in the *KCNMA1* linkage to patient symptoms, paroxysmal non-kinesigenic dyskinesia-3 with or without generalized epilepsy (PNKD3; MIM #609446) is now recognized as distinct type of movement disorder linked to at least two mutations in *KCNMA1* (D434G and N995S/N999S/N1053S).

For mutations where only a single patient defines the clinical presentation, causality must still be investigated. Nine additional de novo *KCNMA1* mutations have been reported in the literature where a single patient represents the known symptomatic information. These mutations include: R458Ter*, G354S, S351Y, G356R, C413Y/N449fs, I6663V, P805L, E884K, and D98N (Zhang et al., 2015; Carvalho-de-Souza et al., 2016; Staisch et al., 2016; Liang et al., 2019; Fig. 1). In these cases, most of the symptoms are similar to those previously described and only a few symptoms do not overlap. For example, seven of the nine patients developed a movement disorder, two developed seizures, all nine were reported to have developmental delay, seven had intellectual disability, and four had abnormal brain imaging indicative of cerebellar atrophy. The new symptoms were mostly related to neurological dysfunction and included autistic

like features and areflexia (Liang et al., 2019). These clinical findings suggest semi-distinct phenotypes associated with some of these mutations (Fig. 4), however the single patient sample size makes it difficult to validate this conclusion.

Lastly, three additional patients with epilepsy were identified to harbor other *KCNMA1* mutations of unknown significance (K518N, E656A, and N1159S). While patch-clamp recordings classified these three variants as benign (Li et al., 2018), the shared symptom of epileptic seizure with other pathogenic *KCNMA1* mutations may indicate these mutations interfere with BK activity and regulation of neuronal excitability through a yet-to-be-defined mechanism.

Across the *KCNMA1*-linked channelopathy patient population, another important outstanding question is whether patient symptoms and phenotypes can be classified with respect to the functional changes in BK channel activity produced by mutations. Patients with both GOF or LOF *KCNMA1* mutations exhibit overlapping symptoms, especially with respect to seizures and neurodevelopment (Fig. 4). Thus, combined with the small patient sample size for each mutation, definitive categorization of specific symptoms with increases or decreases in BK channel activity is not yet possible. Moreover, published reports lack detailed clinical description, further limiting the ability to determine if particular symptoms are specific to GOF versus LOF channel mutations. Nevertheless, a few symptoms, primarily movement disorders and muscle dysfunction, appear to be somewhat distinct for GOF versus LOF mutations (Fig. 4). Below, we summarize the variability of symptoms pertaining to seizure, movement disorder, and neurodevelopment for all patients, while highlighting certain symptoms that may segregate with GOF or LOF mutations.

Movement disorder

A predominant phenotype of *KCNMA1*-linked channelopathy, regardless of the functional classification of the mutation (GOF, LOF, or VUS), is movement disorder. 24 of the 37 patients were reported to have symptoms related to a movement disorder with variability of the symptomatic presentation among patients. However, there seems to be more apparent segregation by channel functional classification for movement disorder compared with other predominant symptoms like seizures. These symptoms include PNKD (GOF) versus ataxia, axial hypotonia, and tremor (LOF; Fig. 4).

PNKD was reported in 17 of 20 GOF patients and only 2 of 13 LOF patients (Du et al., 2005; Zhang et al., 2015; Staisch et al., 2016; Wang et al., 2017; Yeşil et al., 2018; Heim et al., 2019). A patient with the VUS E884K mutation was also reported to have paroxysmal dyskinesia (Zhang et al., 2015). The paroxysmal dyskinesia symptoms were described as “nonkinesigenic” due to the lack of a movement trigger, in contrast to the more common paroxysmal kinesigenic dyskinesia, which is induced by various movements, and other forms of dyskinesia such as exertion-induced dyskinesia. Although the patients were diagnosed with PNKD, the specific types of movements and body parts involved during PNKD attacks were not stereotypical between patients. For example, the patients with D434G GOF mutation experienced episodes of involuntary mouth movements and

hand stiffness during attacks (Du et al., 2005). Another patient harboring the G354S LOF mutation was reported to have perioral dyskinesia diagnosed at 18 mo (Staisch et al., 2016). One patient with the N1053S mutation was diagnosed with PNKD at 7 mo after having paroxysmal dystonic postures (Zhang et al., 2015). The three patients with N999S mutations were all diagnosed at different ages with alike paroxysmal drop attacks characterized by behavioral arrest and generalized dystonic posture or stiffening (Heim et al., 2019; A.L. Meredith and S. Keros, personal observations). The frequency and duration of these movement attacks were variable, ranging from few to many dozens of attacks every day, and lasting a few seconds to minutes. OMIM defines this movement disorder phenotype as “PNKD type 3” or “PNKD3” (MIM #609446), because *KCNMA1* was the third gene linked to a PNKD phenotype. The other two genes include *MR1* located on chromosome 2q35 and *PNKD2* on chromosome 2q31, and they correspond to *PNKD1* (phenotype MIM #118800) and *PNKD2* (phenotype MIM #611147), respectively. However, the specific term PNKD3 is not systematically used for patients with *PNKD* and *KCNMA1* mutations in the literature, suggesting existing and new patients expressing similar symptoms should be reevaluated for this diagnosis.

A movement disorder distinct from PNKD, and noted only in LOF patients, was ataxia (Fig. 4; Carvalho-de-Souza et al., 2016; Liang et al., 2019), a phenotype also well described in BK channel “knockout” mice harboring a LOF deletion in the *KCNMA1* gene (Meredith et al., 2004; Sausbier et al., 2004; Chen et al., 2010). In patients, the ataxic symptoms included lack of coordination, unbalanced gait, and spasticity of lower extremities. Three of the five ataxic patients also had cerebellar atrophy diagnosed by brain MRI (Carvalho-de-Souza et al., 2016; Liang et al., 2019), which was another clinical finding distinct for LOF patients. Studies of *KCNMA1*^{-/-} mouse models showed reduced basal firing from cerebellar Purkinje neurons and impaired cerebellar signaling and motor coordination, which may offer a possible mechanism for the ataxic symptoms in these patients (Sausbier et al., 2004). In addition, BK channel inhibitors produce ataxia when ingested or injected (Imlach et al., 2008; McManus and Rothberg, 2014; Hoshi and Heinemann, 2016; Kaczorowski and Garcia, 2016), supporting association between BK channel LOF and ataxic movement disorder.

Baseline axial hypotonia is another motor dysfunction symptom most prominent with LOF mutations (Fig. 4). The axial hypotonia reported in 8 of 13 LOF patients ranged from mild to severe and was independent from PNKD-associated symptoms noted in GOF patients (Tabarki et al., 2016; Liang et al., 2019). Additionally, tremor was noted in two LOF patients, and is a phenotype shared with BK channel KO mice (Sausbier et al., 2004; Imlach et al., 2008), but specific details describing this symptom were not provided (Yeşil et al., 2018; Liang et al., 2019). Further diagnostic studies are required to determine if these movement disorder attacks are due to mutant BK channel activity within the affected muscle groups, or whether they are secondary to CNS dysfunction, as both mechanisms are seen in a variety of channelopathies associated with movement disorders (Graves and Hanna, 2005).

Seizure disorder

Seizure is another predominant symptom associated with both GOF and LOF *KCNMA1* mutations. 18 of the 37 patients described in this review developed epileptic seizures. However, there was considerable variability among the characteristics of the seizures such as age of onset, type, EEG pattern, frequency and duration, and response to medications. None of these characteristics are clearly delineated by the mutation type. Both GOF and LOF mutations are associated with overlapping seizure phenotypes including myoclonic (Tabarki et al., 2016; Li et al., 2018), generalized tonic-clonic (GTCS; Du et al., 2005; Tabarki et al., 2016; Yeşil et al., 2018), and absence seizures (Du et al., 2005; Li et al., 2018; Yeşil et al., 2018; Liang et al., 2019; Fig. 4). Interestingly, all nine GOF patients experienced absence seizures whereas only three of six LOF patients experienced them. Atonic seizures and status epilepticus were only reported in two different patients expressing LOF mutations (Yeşil et al., 2018; Liang et al., 2019). 10 of the 18 patients were reported to have abnormal inter-ictal EEG findings ranging from mild background slowing to generalized spike wave complexes to Lennox-Gastaut patterning (Du et al., 2005; Tabarki et al., 2016; Li et al., 2018; Yeşil et al., 2018). Age of onset for seizure also varied between patients regardless of the mutation type. Of the 13 family members expressing a D434G GOF mutation, 6 were diagnosed with epilepsy at ages ranging from 6 mo and 9 yr (Du et al., 2005). Three of the seven patients expressing a N995S or N999S GOF mutation began experiencing seizures at 20 mo, 6 yr, and 9 yr of age (Li et al., 2018; Heim et al., 2019; A.L. Meredith and S. Keros, personal observations), and the two siblings with the same Y676Lfs*7 putative LOF mutation had seizures beginning at one year of age (Tabarki et al., 2016). As in the general population, it is likely that seizure heterogeneity with this subset of patients is heavily influenced by additional factors (Steinlein, 2008).

Neurodevelopmental and cognitive phenotypes

Patients with both GOF and LOF *KCNMA1* alleles showed developmental delay and intellectual disability (Fig. 4). Of the 37 patients reported in the literature, 21 were described as having developmental delay (Zhang et al., 2015; Carvalho-de-Souza et al., 2016; Wang et al., 2017; Li et al., 2018; Yeşil et al., 2018; Heim et al., 2019; Liang et al., 2019) and 12 were noted to have intellectual disability (Zhang et al., 2015; Carvalho-de-Souza et al., 2016; Wang et al., 2017; Heim et al., 2019; Liang et al., 2019). The developmental delays ranged from mild to severe and included psychomotor symptoms such as delayed/unstable sitting, inability to support head or walk unassisted, speech delay, and global developmental delay (Zhang et al., 2015; Tabarki et al., 2016; Heim et al., 2019; Liang et al., 2019). A subset of neurodevelopmental symptoms has only been described in patients with LOF *KCNMA1* alleles (Fig. 4). One patient had hearing impairment (Liang et al., 2019), and multiple patients demonstrated visual impairment due to nystagmus, strabismus, and macular coloboma (Carvalho-de-Souza et al., 2016; Liang et al., 2019). Two patients had autism disorder or features (Heim et al., 2019; A.L. Meredith and S. Keros, personal observations), which together with mental retardation was

previously associated with a potential LOF SNP in *KCNMA1* (Laumonier et al., 2006).

Lessons from animal studies linking changes in BK channel function to neurological phenotypes

Within the rodent brain, high levels of BK channel expression are detected in the neocortex, basal ganglia, hippocampus, thalamus, habenula and its tract to the interpeduncular nucleus in the midbrain, cerebellum, vestibular nuclei in the hindbrain, and olfactory system (Knaus et al., 1996; Wanner et al., 1999; Misonou et al., 2006; Sausbier et al., 2006b; Yue et al., 2014). Animals with functional deficiency of BK channels displayed behaviors that can recapitulate some of the movement symptoms in patients with putative LOF *KCNMA1* mutations. Pharmacological inhibition of BK channels with loltrem B or paxilline induced tremor and ataxia in mice and livestock (Imlach et al., 2008), and constitutive deletion of *KCNMA1* (*KCNMA1*^{-/-}) produced several types of motor impairments such as ataxia, tremor, impaired motor coordination, reduced muscle strength, and abnormal eye blink reflex in mice (Meredith et al., 2004; Sausbier et al., 2004; Imlach et al., 2008; Typlt et al., 2013a). The motor impairments exhibited by *KCNMA1*^{-/-} mice suggested cerebellar dysfunction. Consistent with this, *KCNMA1*^{-/-} Purkinje neurons showed significantly reduced basal firing activity and increased short term transmission depression at synapses on deep cerebellar nuclei and disrupted olivocerebellar feedback (Sausbier et al., 2004; Chen et al., 2010). The direct influence of GOF mutations in BK channel function on motor control has not yet been investigated, but mice harboring a strong (nonpatient-derived) GOF mutation that increases voltage-dependent gating of the BK channel (R207Q) have grossly normal locomotor behavior (Montgomery and Meredith, 2012). Taken together, the results from animal models demonstrate that BK channel LOF is associated with movement disorder phenotypes that are also observed in human patients, and further suggest the potential for segregation of distinct motor dysfunction with LOF versus GOF BK channel alterations.

Unlike motor dysfunction, both LOF and GOF alterations in BK channel activity have been linked with the seizure pathophysiology in animal studies. In a chronic temporal lobe epileptic rat model, expression of the BK channel α -subunit encoded by *KCNMA1* was down-regulated in hippocampus and cortex (Ermolinsky et al., 2008; Pacheco Otorola et al., 2008), suggesting a link between seizure and LOF in BK channel activity. BK channel expression and BK current levels were also reduced in the inferior colliculus during alcohol withdrawal periods in a rat model of alcohol withdrawal seizures (N'Gouemo et al., 2009). However, a direct causal relationship between LOF alterations in BK channel activity and epileptogenesis has not yet been reported.

There is a more solid correlation between GOF alterations in BK channel activity and seizure. Deletion of regulatory β 4 subunit (*KCNMB4*^{-/-}), which slows BK channel activation, produced temporal lobe seizures cortex in mice, associated with hyperactive firing in dentate granule (DG) cells in the hippocampus (Brenner et al., 2005). In addition, kainic acid-induced seizure susceptibility was increased in β 4 heterozygous mice (Whitmore

et al., 2017). Furthermore, in a model of fragile X syndrome, enhancement of BK channel activity in *KCNMB4*^{-/-} mice was associated with alterations in epileptiform activity in hippocampal slices (Deng and Klyachko, 2016). Several other studies also show situations where increased BK channel expression was associated with hyperexcitability and seizure activity. Elevated cell surface expression and activity of BK channels via mutation of *CRL4A*^{CRBN} ubiquitin ligase increased susceptibility to spontaneous and PTZ-induced seizures in mice, an effect that can be reduced by pretreatment of the mice with the BK channel inhibitor paxilline (Liu et al., 2014). Up-regulation of BK α and down-regulation of $\beta 4$ protein were reported after seizure induction in rats (Savina et al., 2014), and $\beta 4$ mRNA was down-regulated in DG cells in the hippocampus following pilocarpine-induced seizure (Whitmire et al., 2017). BK currents in somatosensory cortex were significantly increased after picrotoxin-induced seizure in mice, and the increased neuronal firing activity was normalized with BK channel inhibitors (Shruti et al., 2008). Similarly, BK blockers normalized DG cell firing rates that were increased during pilocarpine-induced seizure episodes in rats (Mehranfard et al., 2014, 2015). These animal studies show that GOF alterations in BK channel activity, either via increased expression or due to loss of the slow gating imparted by the $\beta 4$ subunit, alters the balance of neuronal activity in the brain. GOF *KCNMA1* mutations affecting BK channel activity in mechanistically similar ways could be causative in *KCNMA1*-linked patient seizures.

Inheritance and prevalence of *KCNMA1*-linked channelopathy

The majority of the pathogenic *KCNMA1* mutations reported in the literature occurred de novo, however few mutations exhibit autosomal recessive or autosomal dominant inheritance patterns (Fig. 1). To date, the literature reports a total of 16 mutations identified in 37 symptomatic patients (Du et al., 2005; Zhang et al., 2015; Carvalho-de-Souza et al., 2016; Tabarki et al., 2016; Wang et al., 2017; Li et al., 2018; Yeşil et al., 2018; Heim et al., 2019; Liang et al., 2019). 17 patients have de novo mutations, which constitute 9/16 *KCNMA1* mutations. 4 patients inherited an autosomal recessive mutation, constituting 3/16 mutations. 13 patients (one family) inherited a single (1/16) autosomal dominant mutation. Additionally, there are three benign *KCNMA1* genetic variants (3/16) identified in three patients with epilepsy (Li et al., 2018). One of these three variants exhibited an autosomal recessive inheritance pattern, but the inheritance patterns for the other two variants were not determined.

KCNMA1-linked channelopathy is a very rare syndrome. The allele frequency of certain pathogenic *KCNMA1* mutations in larger populations is estimated to be less than 1:100,000 in the Genome Aggregation Database (D434G = 3×10^{-5} and Y676Lfs*7 = 4×10^{-6} ; Lek et al., 2016). However, the allele frequency in larger populations is unknown for majority of the pathogenic *KCNMA1* mutations owing to the rarity of this syndrome. Table S1 provides information regarding the number of missense SNPs present in *KCNMA1* and putative pathogenic mutations reported by different large-scale sequencing databases.

Diagnosis and treatment of *KCNMA1*-linked channelopathy

Epilepsy and movement disorders are known to be caused by several different medical conditions, a subset of which are the result of monogenetic channelopathies (Brenner and Wilcox, 2012; Kim, 2014). Traditionally, if a patient presents with epileptic seizures and movement attacks with otherwise unremarkable brain imaging and normal neurological function between episodes, then a genetic channelopathy is a leading consideration and genetic testing is recommended to search for causative genetic mutations. The D434G mutation was initially mapped via microsatellite linkage analysis (Du et al., 2005); however, causative genetic findings in neurological disorders are more routinely established now by single gene analysis, panels of multiple gene tests for disorders which share a specific phenotype, or by high-powered WES or whole genome sequencing (WGS; Pulst, 1999). When patient symptoms are extensive and a test for multiple pathogenic genetic mutations is desired, WES is typically used instead of WGS (Kong et al., 2018). WES is less costly than WGS, and the majority of pathogenic variants are found within the coding regions or splice sites of proteins. However, WES is prone to incomplete coverage of certain loci, variability in coverage from person to person, and has susceptibility to false positives and negatives. Of the 37 patients described in the literature, 21 were identified to have a *KCNMA1* mutation using WES (Staisch et al., 2016; Tabarki et al., 2016; Li et al., 2018; Yeşil et al., 2018; Heim et al., 2019; Liang et al., 2019).

On the other hand, when the clinical symptoms are well defined or stereotypical such as generalized epilepsy and paroxysmal dyskinesia, as is the case with some patients with *KCNMA1*-linked channelopathy, a limited set of specific candidate genes are assayed. At present, 29 commercial gene panels include *KCNMA1* (Table S2). Of note, the genes included with each panel are frequently updated as additional genetic mutations are associated with specific medical conditions. Three of the 37 patients with *KCNMA1* mutations were identified using epilepsy- and paroxysmal dyskinesia-specific gene panels (Zhang et al., 2015; Wang et al., 2017).

Development of treatment regimens specific for *KCNMA1*-linked channelopathy (“precision medicine”) is currently limited by several important factors, including (a) lack of FDA-approved selective BK channel pharmacological modulators, (b) lack of stereotypical clinical presentations with respect to core symptoms (movement disorder and seizure), (c) lack of established causality between alterations in channel activity and patient symptoms, and (d) inadequate medical assessment identifying the loci for symptoms in patients. Thus, the majority *KCNMA1*-linked channelopathy patients with seizures have been treated with anti-seizure medications (ASMs) selected with the same general approach as for any nonsyndromic epilepsy. Several *KCNMA1* patient studies commented on the efficacy of various ASMs and demonstrate the range of patient responses may range from positive, to no response, to negative.

Sodium valproate and/or lamotrigine were effective in treating the absence seizures in the proband with the GOF D434G mutation (Du et al., 2005), as well as the absence, GTCS, and atonic seizures in a patient with the LOF R458Ter* mutation

(Yeşil et al., 2018), and myoclonic seizures in a patient with homozygous LOF Tyr676Leufs*7 mutation (Tabarki et al., 2016). These two ASMs were also used to treat absence seizures in two patients with the LOF G375R mutation, but efficacy of the treatments was not reported (Liang et al., 2019). The second patient with the homozygous Tyr676Leufs*7 mutation and myoclonic seizures and GTCS was treated effectively with sodium valproate and levetiracetam (Tabarki et al., 2016). Levetiracetam alone was effective to treat atypical absence and myoclonic seizures in two patients with the GOF N995S mutation (Li et al., 2018). However, one of these patients was trialed on various ASMs before levetiracetam; treatment with oxcarbazepine, and sodium valproate produced negative side effects, sultiame and perampanel did not have any effects, and zonisamide monotherapy reduced the seizure frequency, but failed to stop the myoclonic seizures. Notably, this patient experienced significant worsening of seizures with ethosuximide, the drug of choice for the absence seizures seen in childhood absence epilepsy. A dramatic worsening of absence seizures at very low doses of ethosuximide also occurred in a GOF N999S patient, reported in Heim et al. (2019), while levetiracetam was not tolerated due to side effects (S. Keros, personal observation). The patient with a LOF D984N mutation was diagnosed with status epilepticus and treated with several ASMs including clobazam, ethosuximide, lamotrigine, zonisamide, sodium valproate, phenobarbital, and lacosamide, but the therapeutic efficacy was not known (Liang et al., 2019).

Paroxysmal dyskinesias are commonly categorized into three main types (kinesigenic or paroxysmal kinesigenic dyskinesia, nonkinesigenic or PNKD, and exercise-induced or PED), and each type has been shown to respond differently to medications (Unterberger and Trinka, 2008). PNKD, the dominant type associated with *KCNMA1*-linked channelopathy, is commonly described as refractory to medications. However, benzodiazepines, particularly clonazepam, and some ASMs have been shown to be effective in some PNKD patients (Unterberger and Trinka, 2008). Additional therapies used to treat other movement disorders, such as acetazolamide in episodic ataxia, have demonstrated positive effects in some patients with PNKD (Silveira-Moriyama et al., 2018). Acetazolamide is a carbonic anhydrase inhibitor and has been suggested as a possible direct agonist of BK channels in rat cerebellar neurons and skeletal muscle (Tricarico et al., 2004; Abbasi et al., 2014; Tricarico and Mele, 2017). However, the potentiating mechanism for acetazolamide on either WT or mutant BK channels is not currently well established.

There are a limited number of reports assessing PNKD treatment and related symptoms in patients harboring *KCNMA1* mutations. Clonazepam was partially effective for two patients with GOF D434G mutations (Du et al., 2005) and reduced the frequency of PNKD attacks in one patient with the N1053S mutation (Wang et al., 2017). Clonazepam was also used to treat dyskinetic tremor, dystonia, and spasticity of the lower extremities in a patient with the R458Ter* mutation (Yeşil et al., 2018). A second patient with the GOF N1053S mutation and paroxysmal dystonic postures was unresponsive to oxcarbazepine, sodium valproate, and levetiracetam (Zhang et al., 2015),

whereas a patient with the GOF N999S mutation experiencing paroxysmal drop attacks responded positively to DHA and acetazolamide after not responding to clonazepam, amitriptyline, or levetiracetam (Heim et al., 2019). A second patient with the N999S mutation and experiencing the paroxysmal drop attacks did not respond to levetiracetam, carbamazepine, valproic acid, vitamin B complex, CBD oil, DHA, 5-HIAA, or pimizide (Heim et al., 2019; A.L. Meredith and S. Keros, personal observations). Overall, within the *KCNMA1*-linked channelopathy population, patient responses to therapies treating seizure and movement disorders are not predictable a priori.

Precision medicine and future directions

For most genetic channelopathies, pharmacologic treatment does not yet consist of modulating the specific activity of mutant ion channels. For *KCNMA1* and other channelopathies, the first hurdle to precision medicine involves categorizing patient mutations into functional classes, such as GOF or LOF. However, these classes are not trivial to define and can be condition- or cell-type specific, related to the particular splice variants, accessory subunits, post-translational channel modifications, and cellular contexts (intracellular calcium, in particular for the BK channel) in which the mutation is tested. For this reason, it is not yet clear whether strategies using patient-derived stem cells, which can only be differentiated into a limited set of cell types, would result in BK channel pharmacological modulators that are ultimately clinically relevant. In addition, GOF, LOF, and potentially benign mutations in BK channel activity are associated with overlapping symptoms (Fig. 4), raising the question of whether selective agonists or antagonists that restore the “correct” level of BK channel activity will actually produce the desired outcome on neuronal activity. Without more detailed information about the origination of the changes in excitability underlying the seizure and movement symptoms in *KCNMA1*-linked channelopathy, it is difficult to ascertain which BK channel components to target, and in which neuron or muscle loci.

Selective BK channel pharmacotherapy has been under development for over two decades, mostly intended to treat smooth muscle dysfunction resulting from LOF in BK channel activity (hypertension, bladder incontinence, stroke, and erectile dysfunction; Christ et al., 2001; Gribkoff et al., 2001; Spektor et al., 2002; Vang et al., 2010; Soder and Petkov, 2011; Liu et al., 2013). Several compounds, including endogenous, naturally occurring, and synthetic, have been identified as BK agonists and trialed as potential therapeutic agents (Hou et al., 2009; Bentzen et al., 2014; Hoshi and Heinemann, 2016). The endogenous class includes heme and heme-breakdown products (Tang et al., 2003; Horrigan et al., 2005), free long-chain polyunsaturated acids (Clarke et al., 2002, 2003), metabolites of cytochrome P450, epoxygenase and lipoxygenase (Félétou, 2009; Hou et al., 2009), and 17 β -estradiol (Valverde et al., 1999). The natural occurring class includes a variety of entities found in herbs, roots, and leaves used in folk medicines for treating asthma and other disorders stemming from smooth muscle dysfunction such as DHS-I (McManus et al., 1993; Nardi et al., 2003). The synthetic class includes benzimidazolone compounds NS004 and

NS1619 (Olesen et al., 1994a,b), the more potent and selective NS11021 (Bentzen et al., 2007), and a newer family of BK channel activators called the GoSlo-SR family (anthra-quinone analogues; Roy et al., 2012). At least one compound, Cym04 (a dehydroabietic acid derivative) has been shown to demonstrate some specificity for a particular BK channel splice variant (Cui et al., 2008; Gessner et al., 2012). Despite the ability of these chemical agents to activate BK channels in vitro and animal studies, only a single drug with therapeutic action targeting the BK channel is FDA approved (Cuppoletti et al., 2007). This drug, Rescula (unoprostone isopropyl ophthalmic solution) is a potent BK channel activator used to reduce ocular pressure in glaucoma (Thieme et al., 2001).

Other potential, but nonselective, neuromodulators that may affect BK channels include docosahexaenoic acid (DHA), an omega-3 fatty acid found in oily fish, acetazolamide, zonisamide, and riluzole. DHA reversibly binds BK α / β 1 expressed primarily in smooth muscle and BK α / β 4 channels expressed primarily in the nervous system in mice. DHA increases peak BK current by 20- to 30-fold at certain physiological voltages (Hoshi et al., 2013a), suggesting potential efficacy for enhancing LOF BK channel activity. While DHA injection in mice lowers blood pressure (Hoshi et al., 2013b), the physiological roles of this fatty acid within the nervous system are not well defined. Injection of DHA in rats increased latency of PTZ-induced seizure implicating its neuroprotective effect ((Trépanier et al., 2014)); however, a systemic review assessing protective role of omega-3 supplementation in human seizures reported inconclusive evidence of benefit (Pourmasoumi et al., 2018). Two patients with *KCNMA1*-linked channelopathy have been trialed on DHA (in combination with acetazolamide; Heim et al., 2019). However, the patients harbor a mutation classified as GOF, suggesting any potential therapeutic effect conferred by DHA might not originate from direct modulation of the BK channel. Thus, the data provide no specific indication on the therapeutic potential for DHA in *KCNMA1*-linked channelopathy patients. Similarly, although acetazolamide has been reported to have agonist effects on BK channels in skeletal muscle (Tricarico et al., 2004; Dinardo et al., 2012), this has not yet been substantiated on BK channels expressed in heterologous cells or neurons. Two other neurological drugs, zonisamide (an ASM) and riluzole, increased K⁺ currents in hippocampal and skeletal cell lines respectively, an effect that was blocked by BK channel inhibitors (Huang et al., 2007; Wang et al., 2008).

Another potential pharmacotherapy based on FDA-approved drugs to normalize BK channel activity associated with GOF mutations is Ca²⁺ channel inhibitors. For GOF mutations, decreasing the Ca²⁺-dependent activation could reduce BK current. While this approach could require knowledge of the specific Ca²⁺ source for the channels in tissues where excitability is altered in the patients, one class of inhibitors, dihydropyridines (DHPs), are known to inhibit BK channel activation in a variety of central neurons (Fagni et al., 1994; Zhang and Gold, 2009; Wang et al., 2016; Whitt et al., 2018). The DHPs, nifedipine and nimodipine, and the non-DHP verapamil, are used for some types of dyskinesia (Abad and Ovsiew, 1993). Verapamil has been used for refractory epilepsy and hyperkinetic movement disorders

(Ovsiew et al., 1998; Narayanan et al., 2016; Lakshmikanthcharan et al., 2018). In addition, there is at least one report that Verapamil might block BK channels directly, further contributing to a reduction in channel activity through a selective mechanism (Harper et al., 2001). However, it has not yet been investigated whether doses effective at reducing BK channel activity in the brain would have cardiac side effects.

Beyond pharmacology, some therapeutic approaches tailored for individual patients with other monogenetic disorders may be conceivable in the future for *KCNMA1*-linked channelopathy, such as gene editing, gene therapy, or optogenetic restoration of neuronal activity. Yet, substantial challenges are present for their application to any disease or disorder, including target specificity, delivery optimization, elimination of off-target side effects, timing optimization before or after critical stages of neurological development (Wykes and Lignani, 2018), and creating animal models that best replicate the genetic channelopathy from the molecular level to the clinical phenotype to determine initial safety and efficacy of such therapies (Tanner and Beeton, 2018). While these precision medicines may hold eventual promise, until the challenges are overcome, development of additional pharmacological approaches remains the major path forward clinically.

Acknowledgments

Sharona E. Gordon served as editor.

We thank Jenna Harvey for preliminary review of the human *KCNMA1* mutations. Figure 1 was created with BioRender.com.

This work was supported by grants from the National Heart, Lung, and Blood Institute (R01-HL102758 to A.L. Meredith), the Training Program in Integrative Membrane Biology, National Heart, Lung, and Blood Institute (T32-GM008181 to A.L. Meredith), the American Physiological Society's Ryuji Ueno award, sponsored by the S & R Foundation (to A.L. Meredith), and a University of Maryland School of Medicine Proposed Research Initiated by Students and Mentors (PRISM) Program Merit Award (to C.S. Bailey).

The authors declare no competing financial interests.

Submitted: 29 July 2019

Accepted: 13 August 2019

References

- Abad, V., and F. Ovsiew. 1993. Treatment of persistent myoclonic tardive dystonia with verapamil. *Br. J. Psychiatry*. 162:554–556. <https://doi.org/10.1192/bjp.162.4.554>
- Abbasi, S., A. Abbasi, and Y. Sarbaz. 2014. Introducing treatment strategy for cerebellar ataxia in mutant med mice: combination of acetazolamide and 4-aminopyridine. *Comput. Methods Programs Biomed.* 113:697–704. <https://doi.org/10.1016/j.cmpb.2013.11.008>
- Adams, P.R., A. Constanti, D.A. Brown, and R.B. Clark. 1982. Intracellular Ca²⁺ activates a fast voltage-sensitive K⁺ current in vertebrate sympathetic neurons. *Nature*. 296:746–749. <https://doi.org/10.1038/296746a0>
- Becker, M.N., R. Brenner, and N.S. Atkinson. 1995. Tissue-specific expression of a *Drosophila* calcium-activated potassium channel. *J. Neurosci.* 15: 6250–6259. <https://doi.org/10.1523/JNEUROSCI.15-09-06250.1995>
- Bell, T.J., K.Y. Miyashiro, J.Y. Sul, R. McCullough, P.T. Buckley, J. Jochems, D.F. Meaney, P. Haydon, C. Cantor, T.D. Parsons, and J. Eberwine. 2008.

- Cytoplasmic BK_{Ca} channel intron-containing mRNAs contribute to the intrinsic excitability of hippocampal neurons. *Proc. Natl. Acad. Sci. USA.* 105:1901-1906. <https://doi.org/10.1073/pnas.0711796105>
- Benton, M.D., A.H. Lewis, J.S. Bant, and I.M. Raman. 2013. Iberitoxin-sensitive and -insensitive BK currents in Purkinje neuron somata. *J. Neurophysiol.* 109:2528-2541. <https://doi.org/10.1152/jn.00127.2012>
- Bentzen, B.H., A. Nardi, K. Calloe, L.S. Madsen, S.P. Olesen, and M. Grunnet. 2007. The small molecule NS11021 is a potent and specific activator of Ca²⁺-activated big-conductance K⁺ channels. *Mol. Pharmacol.* 72:1033-1044. <https://doi.org/10.1124/mol.107.038331>
- Bentzen, B.H., S.P. Olesen, L.C. Rönn, and M. Grunnet. 2014. BK channel activators and their therapeutic perspectives. *Front. Physiol.* 5:389. <https://doi.org/10.3389/fphys.2014.00389>
- Berkefeld, H., and B. Fakler. 2008. Repolarizing responses of BK_{Ca}-Ca_v complexes are distinctly shaped by their Ca_v subunits. *J. Neurosci.* 28:8238-8245. <https://doi.org/10.1523/JNEUROSCI.2274-08.2008>
- Bock, T., and G.J. Stuart. 2016. The Impact of BK Channels on Cellular Excitability Depends on their Subcellular Location. *Front. Cell. Neurosci.* 10:206. <https://doi.org/10.3389/fncel.2016.00206>
- Brenner, R., and K.S. Wilcox. 2012. Potassium Channelopathies of Epilepsy. In *Jasper's Basic Mechanisms of the Epilepsies*. J.L. Noebels, M. Avoli, M.A. Rogawski, R.W. Olsen, and A.V. Delgado-Escueta, editors. 1029-1048.
- Brenner, R., T.J. Jegla, A. Wickenden, Y. Liu, and R.W. Aldrich. 2000. Cloning and functional characterization of novel large conductance calcium-activated potassium channel beta subunits, hKCNMB3 and hKCNMB4. *J. Biol. Chem.* 275:6453-6461. <https://doi.org/10.1074/jbc.275.9.6453>
- Brenner, R., Q.H. Chen, A. Vilaythong, G.M. Toney, J.L. Noebels, and R.W. Aldrich. 2005. BK channel beta4 subunit reduces dentate gyrus excitability and protects against temporal lobe seizures. *Nat. Neurosci.* 8:1752-1759. <https://doi.org/10.1038/nm1573>
- Brown, S.M., L.M. Bentcheva-Petkova, L. Liu, K.L. Hristov, M. Chen, W.F. Kellett, A.L. Meredith, R.W. Aldrich, M.T. Nelson, and G.V. Petkov. 2008. Beta-adrenergic relaxation of mouse urinary bladder smooth muscle in the absence of large-conductance Ca²⁺-activated K⁺ channel. *Am. J. Physiol. Renal Physiol.* 295:F1149-F1157. <https://doi.org/10.1152/ajprenal.00440.2007>
- Carvalho-de-Souza, J., T. Kubota, X. Du, R. Latorre, C.M. Gomez, and F. Bezanilla. 2016. A Missense Mutation in the Selectivity Filter of BK Affects the Channel's Potassium Conductance. *Biophys. J.* 110:499a. <https://doi.org/10.1016/j.bpj.2015.11.2412>
- Chen, X., Y. Kovalchuk, H. Adelsberger, H.A. Henning, M. Sausbier, G. Wietzorrek, P. Ruth, Y. Yarom, and A. Konnerth. 2010. Disruption of the olivo-cerebellar circuit by Purkinje neuron-specific ablation of BK channels. *Proc. Natl. Acad. Sci. USA.* 107:12323-12328. <https://doi.org/10.1073/pnas.1001745107>
- Christ, G.J., N.S. Day, M. Day, C. Santizo, W. Zhao, T. Sclafani, J. Zinman, K. Hsieh, K. Venkateswarlu, M. Valcic, and A. Melman. 2001. Bladder injection of "naked" hSlo/pcDNA3 ameliorates detrusor hyperactivity in obstructed rats in vivo. *Am. J. Physiol. Regul. Integr. Comp. Physiol.* 281:R1699-R1709. <https://doi.org/10.1152/ajpregu.2001.281.5.R1699>
- Christ, G.J., K.E. Andersson, K. Williams, W. Zhao, R. D'Agostino Jr., J. Kaplan, T. Aboushwareb, J. Yoo, G. Calenda, K.P. Davies, et al. 2009. Smooth-muscle-specific gene transfer with the human maxi-k channel improves erectile function and enhances sexual behavior in atherosclerotic cynomolgus monkeys. *Eur. Urol.* 56:1055-1066. <https://doi.org/10.1016/j.eururo.2008.12.016>
- Clarke, A.L., S. Petrou, J.V. Walsh Jr., and J.J. Singer. 2002. Modulation of BK_{Ca} channel activity by fatty acids: structural requirements and mechanism of action. *Am. J. Physiol. Cell Physiol.* 283:C1441-C1453. <https://doi.org/10.1152/ajpcell.00035.2002>
- Clarke, A.L., S. Petrou, J.V. Walsh Jr., and J.J. Singer. 2003. Site of action of fatty acids and other charged lipids on BK_{Ca} channels from arterial smooth muscle cells. *Am. J. Physiol. Cell Physiol.* 284:C607-C619. <https://doi.org/10.1152/ajpcell.00364.2002>
- Contet, C., S.P. Goulding, D.A. Kuljis, and A.L. Barth. 2016. BK Channels in the Central Nervous System. *Int. Rev. Neurobiol.* 128:281-342. <https://doi.org/10.1016/bs.irm.2016.04.001>
- Cui, J., H. Yang, and U.S. Lee. 2009. Molecular mechanisms of BK channel activation. *Cell. Mol. Life Sci.* 66:852-875. <https://doi.org/10.1007/s0018-008-8609-x>
- Cui, Y.M., E. Yasutomi, Y. Otani, T. Yoshinaga, K. Ido, K. Sawada, and T. Ohwada. 2008. Novel BK channel openers containing dehydroabiatic acid skeleton: structure-activity relationship for peripheral substituents on ring C. *Bioorg. Med. Chem. Lett.* 18:5201-5205. <https://doi.org/10.1016/j.bmcl.2008.08.078>
- Cuppoletti, J., D.H. Malinowska, K.P. Tewari, J. Chakrabarti, and R. Ueno. 2007. Cellular and molecular effects of unoprostone as a BK channel activator. *Biochim. Biophys. Acta.* 1768:1083-1092. <https://doi.org/10.1016/j.bbame.2006.12.015>
- Deng, P.Y., and V.A. Klyachko. 2016. Genetic upregulation of BK channel activity normalizes multiple synaptic and circuit defects in a mouse model of fragile X syndrome. *J. Physiol.* 594:83-97. <https://doi.org/10.1113/jp271031>
- Díez-Sampedro, A., W.R. Silverman, J.F. Bautista, and G.B. Richerson. 2006. Mechanism of increased open probability by a mutation of the BK channel. *J. Neurophysiol.* 96:1507-1516. <https://doi.org/10.1152/jn.00461.2006>
- Dinardo, M.M., G. Camerino, A. Mele, R. Latorre, D. Conte Camerino, and D. Tricarico. 2012. Splicing of the rSlo gene affects the molecular composition and drug response of Ca²⁺-activated K⁺ channels in skeletal muscle. *PLoS One.* 7:e40235. <https://doi.org/10.1371/journal.pone.0040235>
- Du, W., J.F. Bautista, H. Yang, A. Díez-Sampedro, S.A. You, L. Wang, P. Kotalag, H.O. Lüders, J. Shi, J. Cui, et al. 2005. Calcium-sensitive potassium channelopathy in human epilepsy and paroxysmal movement disorder. *Nat. Genet.* 37:733-738. <https://doi.org/10.1038/ng1585>
- Düfer, M., Y. Neye, K. Hörth, P. Krippeit-Drews, A. Hennige, H. Widmer, H. McClafferty, M.J. Shipston, H.U. Häring, P. Ruth, and G. Drews. 2011. BK channels affect glucose homeostasis and cell viability of murine pancreatic beta cells. *Diabetologia.* 54:423-432. <https://doi.org/10.1007/s00125-010-1936-0>
- Dworetzky, S.I., J.T. Trojnecki, and V.K. Gribkoff. 1994. Cloning and expression of a human large-conductance calcium-activated potassium channel. *Brain Res. Mol. Brain Res.* 27:189-193. [https://doi.org/10.1016/0169-328X\(94\)90203-8](https://doi.org/10.1016/0169-328X(94)90203-8)
- Ermolinsky, B., M.F. Arshadmansab, L.F. Pacheco Otalora, M.M. Zarei, and E.R. Garrido-Sanabria. 2008. Deficit of *Kcma1* mRNA expression in the dentate gyrus of epileptic rats. *Neuroreport.* 19:1291-1294. <https://doi.org/10.1097/WNR.0b013e3283094bb6>
- Essin, K., M. Gollasch, S. Rolle, P. Weissgerber, M. Sausbier, E. Bohn, I.B. Autenrieth, P. Ruth, F.C. Luft, W.M. Nauseef, and R. Kettritz. 2009. BK channels in innate immune functions of neutrophils and macrophages. *Blood.* 113:1326-1331. <https://doi.org/10.1182/blood-2008-07-166660>
- Faber, E.S., and P. Sah. 2002. Physiological role of calcium-activated potassium currents in the rat lateral amygdala. *J. Neurosci.* 22:1618-1628. <https://doi.org/10.1523/JNEUROSCI.22-05-01618.2002>
- Faber, E.S., and P. Sah. 2003. Calcium-activated potassium channels: multiple contributions to neuronal function. *Neuroscientist.* 9:181-194. <https://doi.org/10.1177/107385840300903011>
- Fagerberg, L., B.M. Hallström, P. Oksvold, C. Kampf, D. Djureinovic, J. Odeberg, M. Habuka, S. Tahmasebpour, A. Danielsson, K. Edlund, et al. 2014. Analysis of the human tissue-specific expression by genome-wide integration of transcriptomics and antibody-based proteomics. *Mol. Cell. Proteomics.* 13:397-406. <https://doi.org/10.1074/mcp.M113.035600>
- Fagni, L., J.L. Bossu, and J. Bockaert. 1994. Inhibitory effects of dihydropyridines on macroscopic K⁺ currents and on the large-conductance Ca²⁺-activated K⁺ channel in cultured cerebellar granule cells. *Pflügers Arch.* 429:176-182. <https://doi.org/10.1007/BF00374310>
- Fakler, B., and J.P. Adelman. 2008. Control of K_{Ca} channels by calcium nano/microdomains. *Neuron.* 59:873-881. <https://doi.org/10.1016/j.neuron.2008.09.001>
- Félétou, M. 2009. Calcium-activated potassium channels and endothelial dysfunction: therapeutic options? *Br. J. Pharmacol.* 156:545-562. <https://doi.org/10.1111/j.1476-5381.2009.00052.x>
- Filosa, J.A., A.D. Bonev, S.V. Straub, A.L. Meredith, M.K. Wilkerson, R.W. Aldrich, and M.T. Nelson. 2006. Local potassium signaling couples neuronal activity to vasodilation in the brain. *Nat. Neurosci.* 9:1397-1403. <https://doi.org/10.1038/nn1779>
- Gessner, G., Y.M. Cui, Y. Otani, T. Ohwada, M. Soom, T. Hoshi, and S.H. Heinemann. 2012. Molecular mechanism of pharmacological activation of BK channels. *Proc. Natl. Acad. Sci. USA.* 109:3552-3557. <https://doi.org/10.1073/pnas.1114321109>
- Girouard, H., A.D. Bonev, R.M. Hannah, A. Meredith, R.W. Aldrich, and M.T. Nelson. 2010. Astrocytic endfoot Ca²⁺ and BK channels determine both arteriolar dilation and constriction. *Proc. Natl. Acad. Sci. USA.* 107:3811-3816. <https://doi.org/10.1073/pnas.0914722107>
- Gittis, A.H., S.H. Moghadam, and S. du Lac. 2010. Mechanisms of sustained high firing rates in two classes of vestibular nucleus neurons: differential contributions of resurgent Na, Kv3, and BK currents. *J. Neurophysiol.* 104:1625-1634. <https://doi.org/10.1152/jn.00378.2010>

- Goldklang, M.P., J.F. Perez-Zoghbi, J. Trischler, T. Nkyimbeng, S.I. Zakharov, T. Shiomi, T. Zelonina, A.R. Marks, J.M. D'Armiento, and S.O. Marx. 2013. Treatment of experimental asthma using a single small molecule with anti-inflammatory and BK channel-activating properties. *FASEB J.* 27:4975–4986. <https://doi.org/10.1096/fj.13-235176>
- Gollasch, M., J. Tank, F.C. Luft, J. Jordan, P. Maass, C. Krasko, A.M. Sharma, A. Busjahn, and S. Bähring. 2002. The BK channel beta1 subunit gene is associated with human baroreflex and blood pressure regulation. *J. Hypertens.* 20:927–933. <https://doi.org/10.1097/00004872-200205000-00028>
- Gonzalez-Perez, V., and C.J. Lingle. 2019. Regulation of BK Channels by Beta and Gamma Subunits. *Annu. Rev. Physiol.* 81:113–137. <https://doi.org/10.1146/annurev-physiol-022516-034038>
- Graves, T.D., and M.G. Hanna. 2005. Neurological channelopathies. *Postgrad. Med. J.* 81:20–32. <https://doi.org/10.1136/pgmj.2004.022012>
- Gribkoff, V.K., J.E. Starret Jr., S.I. Dworetzky, P. Hewawasam, C.G. Boissard, D.A. Cook, S.W. Frantz, K. Heman, J.R. Hibbard, K. Huston, et al. 2001. Targeting acute ischemic stroke with a calcium-sensitive opener of maxi-K potassium channels. *Nat. Med.* 7:471–477. <https://doi.org/10.1038/86546>
- Grimes, W.N., W. Li, A.E. Chávez, and J.S. Diamond. 2009. BK channels modulate pre- and postsynaptic signaling at reciprocal synapses in retina. *Nat. Neurosci.* 12:585–592. <https://doi.org/10.1038/nn.2302>
- Grimm, P.R., and S.C. Sansom. 2010. BK channels and a new form of hypertension. *Kidney Int.* 78:956–962. <https://doi.org/10.1038/ki.2010.272>
- Gu, N., K. Vervaeke, and J.F. Storm. 2007. BK potassium channels facilitate high-frequency firing and cause early spike frequency adaptation in rat CA1 hippocampal pyramidal cells. *J. Physiol.* 580:859–882. <https://doi.org/10.1113/jphysiol.2006.126367>
- Halm, S.T., M.A. Bottomley, M.M. Almutairi, M. Di Fulvio, and D.R. Halm. 2017. Survival and growth of C57BL/6j mice lacking the BK channel, *Kcma1*: lower adult body weight occurs together with higher body fat. *Physiol. Rep.* 5:5. <https://doi.org/10.14814/phy2.13137>
- Han, S., B.Z. Yang, H.R. Kranzler, X. Liu, H. Zhao, L.A. Farrer, E. Boerwinkle, J.B. Potash, and J. Gelernter. 2013. Integrating GWASs and human protein interaction network identifies a gene subnetwork underlying alcohol dependence. *Am. J. Hum. Genet.* 93:1027–1034. <https://doi.org/10.1016/j.ajhg.2013.10.021>
- Harper, A.A., L. Catacuzzeno, C. Trequatrin, A. Petris, and F. Franciolini. 2001. Verapamil block of large-conductance Ca-activated K channels in rat aortic myocytes. *J. Membr. Biol.* 179:103–111. <https://doi.org/10.1007/s002320010041>
- Hayashi, Y., S. Morinaga, J. Zhang, Y. Satoh, A.L. Meredith, T. Nakata, Z. Wu, S. Kohsaka, K. Inoue, and H. Nakanishi. 2016. BK channels in microglia are required for morphine-induced hyperalgesia. *Nat. Commun.* 7:11697. <https://doi.org/10.1038/ncomms11697>
- Hei, H., J. Gao, J. Dong, J. Tao, L. Tian, W. Pan, H. Wang, and X. Zhang. 2016. BK Knockout by TALEN-Mediated Gene Targeting in Osteoblasts: KCNMA1 Determines the Proliferation and Differentiation of Osteoblasts. *Mol. Cells.* 39:530–535. <https://doi.org/10.14348/molcells.2016.0033>
- Heim, J., A. Vemuri, S. Lewis, A. Meredith, S. Keros, and M. Kruer. 2019. Drop attacks in patients with KCNMA1 p.N999S heterozygous de novo mutations. *6th International Symposium on Paediatric Movement Disorders*.
- Henne, J., and G. Jeserich. 2004. Maturation of spiking activity in trout retinal ganglion cells coincides with upregulation of Kv3.1- and BK-related potassium channels. *J. Neurosci. Res.* 75:44–54. <https://doi.org/10.1002/jnr.10830>
- Hille, B. 2001. *Ion Channels of Excitable Membranes*. Sinauer Associates, Sunderland, MA.
- Hirukawa, K., K. Muraki, S. Ohya, Y. Imaizumi, and A. Togari. 2008. Electrophysiological properties of a novel Ca²⁺-activated K⁺ channel expressed in human osteoblasts. *Calcif. Tissue Int.* 83:222–229. <https://doi.org/10.1007/s00223-008-9167-9>
- Horrigan, F.T., and R.W. Aldrich. 2002. Coupling between voltage sensor activation, Ca²⁺ binding and channel opening in large conductance (BK) potassium channels. *J. Gen. Physiol.* 120:267–305. <https://doi.org/10.1085/jgp.20028605>
- Horrigan, F.T., J. Cui, and R.W. Aldrich. 1999. Allosteric voltage gating of potassium channels I. Mslo ionic currents in the absence of Ca²⁺. *J. Gen. Physiol.* 114:277–304. <https://doi.org/10.1085/jgp.114.2.277>
- Horrigan, F.T., S.H. Heinemann, and T. Hoshi. 2005. Heme regulates allosteric activation of the Slo1 BK channel. *J. Gen. Physiol.* 126:7–21. <https://doi.org/10.1085/jgp.200509262>
- Hoshi, T., and S.H. Heinemann. 2016. Modulation of BK Channels by Small Endogenous Molecules and Pharmaceutical Channel Openers. *Int. Rev. Neurobiol.* 128:193–237. <https://doi.org/10.1016/bs.irm.2016.03.020>
- Hoshi, T., Y. Tian, R. Xu, S.H. Heinemann, and S. Hou. 2013a. Mechanism of the modulation of BK potassium channel complexes with different auxiliary subunit compositions by the omega-3 fatty acid DHA. *Proc. Natl. Acad. Sci. USA.* 110:4822–4827. <https://doi.org/10.1073/pnas.1222003110>
- Hoshi, T., B. Wissuwa, Y. Tian, N. Tajima, R. Xu, M. Bauer, S.H. Heinemann, and S. Hou. 2013b. Omega-3 fatty acids lower blood pressure by directly activating large-conductance Ca²⁺-dependent K⁺ channels. *Proc. Natl. Acad. Sci. USA.* 110:4816–4821. <https://doi.org/10.1073/pnas.1221997110>
- Hou, S., S.H. Heinemann, and T. Hoshi. 2009. Modulation of BK_{Ca} channel gating by endogenous signaling molecules. *Physiology (Bethesda).* 24: 26–35.
- Houamed, K.M., I.R. Sweet, and L.S. Satin. 2010. BK channels mediate a novel ionic mechanism that regulates glucose-dependent electrical activity and insulin secretion in mouse pancreatic β -cells. *J. Physiol.* 588: 3511–3523. <https://doi.org/10.1113/jphysiol.2009.184341>
- Huang, C.W., C.C. Huang, and S.N. Wu. 2007. Activation by zonisamide, a newer antiepileptic drug, of large-conductance calcium-activated potassium channel in differentiated hippocampal neuron-derived H19-7 cells. *J. Pharmacol. Exp. Ther.* 321:98–106. <https://doi.org/10.1124/jpet.106.116954>
- Imlach, W.L., S.C. Finch, J. Dunlop, A.L. Meredith, R.W. Aldrich, and J.E. Dalziel. 2008. The molecular mechanism of “ryegrass staggers,” a neurological disorder of K⁺ channels. *J. Pharmacol. Exp. Ther.* 327: 657–664. <https://doi.org/10.1124/jpet.108.143933>
- Imlach, W.L., S.C. Finch, J.H. Miller, A.L. Meredith, and J.E. Dalziel. (2010). A role for BK channels in heart rate regulation in rodents. *PLoS One* 5, e8698.
- Jaffe, D.B., B. Wang, and R. Brenner. 2011. Shaping of action potentials by type I and type II large-conductance Ca²⁺-activated K⁺ channels. *Neuroscience.* 192:205–218. <https://doi.org/10.1016/j.neuroscience.2011.06.028>
- Jaggard, J.H., V.A. Porter, W.J. Lederer, and M.T. Nelson. 2000. Calcium sparks in smooth muscle. *Am. J. Physiol. Cell Physiol.* 278:C235–C256. <https://doi.org/10.1152/ajpcell.2000.278.2.C235>
- Jin, W., A. Sugaya, T. Tsuda, H. Ohguchi, and E. Sugaya. 2000. Relationship between large conductance calcium-activated potassium channel and bursting activity. *Brain Res.* 860:21–28. [https://doi.org/10.1016/S0006-8993\(00\)01943-0](https://doi.org/10.1016/S0006-8993(00)01943-0)
- Kaczorowski, G.J., and M.L. Garcia. 2016. Developing Molecular Pharmacology of BK Channels for Therapeutic Benefit. *Int. Rev. Neurobiol.* 128: 439–475. <https://doi.org/10.1016/bs.irm.2016.02.013>
- Kent, J., and A.L. Meredith. 2008. BK channels regulate spontaneous action potential rhythmicity in the suprachiasmatic nucleus. *PLoS One.* 3: e3884. <https://doi.org/10.1371/journal.pone.0003884>
- Kim, J.B. 2014. Channelopathies. *Korean J. Pediatr.* 57:1–18. <https://doi.org/10.3345/kjp.2014.57.1.1>
- Knaus, H.G., C. Schwarzer, R.O. Koch, A. Eberhart, G.J. Kaczorowski, H. Glossmann, F. Wunder, O. Pongs, M.L. Garcia, and G. Sperk. 1996. Distribution of high-conductance Ca²⁺-activated K⁺ channels in rat brain: targeting to axons and nerve terminals. *J. Neurosci.* 16:955–963. <https://doi.org/10.1523/JNEUROSCI.16-03-00955.1996>
- Kong, S.W., I.H. Lee, X. Liu, J.N. Hirschhorn, and K.D. Mandl. 2018. Measuring coverage and accuracy of whole-exome sequencing in clinical context. *Genet. Med.* 20:1617–1626. <https://doi.org/10.1038/gim.2018.51>
- Kyle, B.D., and A.P. Braun. 2014. The regulation of BK channel activity by pre- and post-translational modifications. *Front. Physiol.* 5:316. <https://doi.org/10.3389/fphys.2014.00316>
- Lai, M.H., Y. Wu, Z. Gao, M.E. Anderson, J.E. Dalziel, and A.L. Meredith. 2014. BK channels regulate sinoatrial node firing rate and cardiac pacing in vivo. *Am. J. Physiol. Heart Circ. Physiol.* 307:H1327–H1338. <https://doi.org/10.1152/ajpheart.00354.2014>
- Lakshminathcharan, S., M. Hisham, S.K. Chaitanya Juluri, and S.M. Nandakumar. 2018. Verapamil as an Adjuvant Treatment for Drug-Resistant Epilepsy. *Indian J. Crit. Care Med.* 22:680–682. https://doi.org/10.4103/ijccm.IJCCM_250_18
- Latorre, R., and C. Miller. 1983. Conduction and selectivity in potassium channels. *J. Membr. Biol.* 71:11–30. <https://doi.org/10.1007/BF01870671>
- Latorre, R., K. Castillo, W. Carrasquel-Ursulaez, R.V. Sepulveda, F. Gonzalez-Nilo, C. Gonzalez, and O. Alvarez. 2017. Molecular Determinants of BK Channel Functional Diversity and Functioning. *Physiol. Rev.* 97:39–87. <https://doi.org/10.1152/physrev.00001.2016>

- Laumonnier, F., S. Roger, P. Guérin, F. Molinari, R. M'rad, D. Cahard, A. Belhadj, M. Halayem, A.M. Persico, M. Elia, et al. 2006. Association of a functional deficit of the BK_{Ca} channel, a synaptic regulator of neuronal excitability, with autism and mental retardation. *Am. J. Psychiatry*. 163: 1622–1629. <https://doi.org/10.1176/ajp.2006.163.9.1622>
- Lee, U.S., and J. Cui. 2010. BK channel activation: structural and functional insights. *Trends Neurosci*. 33:415–423. <https://doi.org/10.1016/j.tins.2010.06.004>
- Lek, M., K.J. Karczewski, E.V. Minikel, K.E. Samocha, E. Banks, T. Fennell, A.H. O'Donnell-Luria, J.S. Ware, A.J. Hill, B.B. Cummings, et al. Exome Aggregation Consortium. 2016. Analysis of protein-coding genetic variation in 60,706 humans. *Nature*. 536:285–291. <https://doi.org/10.1038/nature19057>
- Li, X., S. Poschmann, Q. Chen, W. Fazeli, N.J. Oundjian, F.M. Snoeijs-Schouwenaars, O. Fricke, E.J. Kamsteeg, M. Willemsen, and Q.K. Wang. 2018. De novo BK channel variant causes epilepsy by affecting voltage gating but not Ca²⁺ sensitivity. *Eur. J. Hum. Genet*. 26:220–229. <https://doi.org/10.1038/s41431-017-0073-3>
- Li, Y., R.A. Lorca, X. Ma, A. Rhodes, and S.K. England. 2014. BK channels regulate myometrial contraction by modulating nuclear translocation of NF-κB. *Endocrinology*. 155:3112–3122. <https://doi.org/10.1210/en.2014-1152>
- Liang, L., X. Li, S. Moutton, S.A. Schrier Vergano, B. Cogne, A. De Saint-Martin, A.C.E. Hurst, Y. Hu, O. Bodamer, J. Thevenon, et al. 2019. De novo loss-of-function KCNMA1 variants are associated with a new multiple malformation syndrome and a broad spectrum of developmental and neurological phenotypes. *Hum. Mol. Genet*. <https://doi.org/10.1093/hmg/ddz117>
- Liu, J., J. Ye, X. Zou, Z. Xu, Y. Feng, X. Zou, Z. Chen, Y. Li, and Y. Cang. 2014. CRL4A(CRBN) E3 ubiquitin ligase restricts BK channel activity and prevents epileptogenesis. *Nat. Commun*. 5:3924. <https://doi.org/10.1038/ncomms4924>
- Liu, R., Z. Zhang, H. Liu, P. Hou, J. Lang, S. Wang, H. Yan, P. Li, Z. Huang, H. Wu, et al. 2013. Human β-defensin 2 is a novel opener of Ca²⁺-activated potassium channels and induces vasodilation and hypotension in monkeys. *Hypertension*. 62:415–425. <https://doi.org/10.1161/HYPERTENSIONAHA.111.01076>
- Liu, W., T. Morimoto, C. Woda, T.R. Kleyman, and L.M. Satlin. 2007. Ca²⁺ dependence of flow-stimulated K secretion in the mammalian cortical collecting duct. *Am. J. Physiol. Renal Physiol*. 293:F227–F235. <https://doi.org/10.1152/ajprenal.00057.2007>
- Ly, C., T. Melman, A.L. Barth, and G.B. Ermentrout. 2011. Phase-resetting curve determines how BK currents affect neuronal firing. *J. Comput. Neurosci*. 30:211–223. <https://doi.org/10.1007/s10827-010-0246-3>
- Maison, S.F., S.J. Pyott, A.L. Meredith, and M.C. Liberman. 2013. Olivocochlear suppression of outer hair cells in vivo: evidence for combined action of BK and SK2 channels throughout the cochlea. *J. Neurophysiol*. 109:1525–1534. <https://doi.org/10.1152/jn.00924.2012>
- Manzanares, D., M. Srinivasan, S.T. Salathe, P. Ivonnet, N. Baumlin, J.S. Dennis, G.E. Conner, and M. Salathe. 2014. IFN-γ-mediated reduction of large-conductance, Ca²⁺-activated, voltage-dependent K⁺ (BK) channel activity in airway epithelial cells leads to mucociliary dysfunction. *Am. J. Physiol. Lung Cell. Mol. Physiol*. 306:L453–L462. <https://doi.org/10.1152/ajplung.00247.2013>
- Martin, G., S. Puig, A. Pietrzykowski, P. Zadek, P. Emery, and S. Treistman. 2004. Somatic localization of a specific large-conductance calcium-activated potassium channel subtype controls compartmentalized ethanol sensitivity in the nucleus accumbens. *J. Neurosci*. 24:6563–6572. <https://doi.org/10.1523/JNEUROSCI.0684-04.2004>
- Maruyama, Y., D.V. Gallacher, and O.H. Petersen. 1983. Voltage and Ca²⁺-activated K⁺ channel in baso-lateral acinar cell membranes of mammalian salivary glands. *Nature*. 302:827–829. <https://doi.org/10.1038/302827a0>
- McCobb, D.P., N.L. Fowler, T. Featherstone, C.J. Lingle, M. Saito, J.E. Krause, and L. Salkoff. 1995. A human calcium-activated potassium channel gene expressed in vascular smooth muscle. *Am. J. Physiol*. 269: H767–H777.
- McManus, O.B., and B.S. Rothberg. 2014. An old probe sheds new light on BK channel pore structure. *J. Gen. Physiol*. 144:499–501. <https://doi.org/10.1085/jgp.201411306>
- McManus, O.B., G.H. Harris, K.M. Giangiacomo, P. Feigenbaum, J.P. Reuben, M.E. Addy, J.F. Burka, G.J. Kaczorowski, and M.L. Garcia. 1993. An activator of calcium-dependent potassium channels isolated from a medicinal herb. *Biochemistry*. 32:6128–6133. <https://doi.org/10.1021/bi00075a002>
- Meera, P., M. Wallner, M. Song, and L. Toro. 1997. Large conductance voltage- and calcium-dependent K⁺ channel, a distinct member of voltage-dependent ion channels with seven N-terminal transmembrane segments (S0-S6), an extracellular N terminus, and an intracellular (S9-S10) C terminus. *Proc. Natl. Acad. Sci. USA*. 94:14066–14071. <https://doi.org/10.1073/pnas.94.25.14066>
- Mehranfard, N., H. Gholamipour-Badie, F. Motamedi, M. Janahmadi, and N. Naderi. 2014. The effect of paxilline on early alterations of electrophysiological properties of dentate gyrus granule cells in pilocarpine-treated rats. *Iran. J. Pharm. Res*. 13(Suppl):125–132.
- Mehranfard, N., H. Gholamipour-Badie, F. Motamedi, M. Janahmadi, and N. Naderi. 2015. Long-term increases in BK potassium channel underlie increased action potential firing in dentate granule neurons following pilocarpine-induced status epilepticus in rats. *Neurosci. Lett*. 585:88–91. <https://doi.org/10.1016/j.neulet.2014.11.041>
- Melman, A., N. Bar-Chama, A. McCullough, K. Davies, and G. Christ. 2007. Plasmid-based gene transfer for treatment of erectile dysfunction and overactive bladder: results of a phase I trial. *Isr. Med. Assoc. J*. 9:143–146.
- Meredith, A.L. 2015. Genetic Methods for Studying Ion Channel Function in Physiology and Disease. In *Handbook of Ion Channels*. M.C. Trudeau, and J. Zheng, editors. CRC Press. 545–556.
- Meredith, A.L., K.S. Thorneloe, M.E. Werner, M.T. Nelson, and R.W. Aldrich. 2004. Overactive bladder and incontinence in the absence of the BK large conductance Ca²⁺-activated K⁺ channel. *J. Biol. Chem*. 279: 36746–36752. <https://doi.org/10.1074/jbc.M405621200>
- Meredith, A.L., S.W. Wiler, B.H. Miller, J.S. Takahashi, A.A. Fodor, N.F. Ruby, and R.W. Aldrich. 2006. BK calcium-activated potassium channels regulate circadian behavioral rhythms and pacemaker output. *Nat. Neurosci*. 9:1041–1049. <https://doi.org/10.1038/nrn1740>
- Misonou, H., M. Menegola, L. Buchwalder, E.W. Park, A. Meredith, K.J. Rhodes, R.W. Aldrich, and J.S. Trimmer. 2006. Immunolocalization of the Ca²⁺-activated K⁺ channel Slo1 in axons and nerve terminals of mammalian brain and cultured neurons. *J. Comp. Neurol*. 496:289–302. <https://doi.org/10.1002/cne.20931>
- Montgomery, J.R., and A.L. Meredith. 2012. Genetic activation of BK currents in vivo generates bidirectional effects on neuronal excitability. *Proc. Natl. Acad. Sci. USA*. 109:18997–19002. <https://doi.org/10.1073/pnas.1205573109>
- Montgomery, J.R., J.P. Whitt, B.N. Wright, M.H. Lai, and A.L. Meredith. 2013. Mis-expression of the BK K⁺ channel disrupts suprachiasmatic nucleus circuit rhythmicity and alters clock-controlled behavior. *Am. J. Physiol. Cell Physiol*. 304:C299–C311. <https://doi.org/10.1152/ajpcell.00302.2012>
- Morrow, J.P., S.I. Zakharov, G. Liu, L. Yang, A.J. Sok, and S.O. Marx. 2006. Defining the BK channel domains required for beta1-subunit modulation. *Proc. Natl. Acad. Sci. USA*. 103:5096–5101. <https://doi.org/10.1073/pnas.0600907103>
- N'Gouemo, P., C.L. Faingold, and M. Morad. 2009. Calcium channel dysfunction in inferior colliculus neurons of the genetically epilepsy-prone rat. *Neuropharmacology*. 56:665–675. <https://doi.org/10.1016/j.neuropharm.2008.11.005>
- Nagaraj, C., B. Tang, B.M. Nagy, R. Papp, P.P. Jain, L.M. Marsh, A.L. Meredith, B. Ghanim, W. Klepetko, G. Kwapiszewska, et al. 2016. Docosahexaenoic acid causes rapid pulmonary arterial relaxation via K_{Ca} channel-mediated hyperpolarisation in pulmonary hypertension. *Eur. Respir. J*. 48:1127–1136. <https://doi.org/10.1183/13993003.01814-2015>
- Narayanan, J., R. Frech, S. Walters, V. Patel, R. Frigerio, and D.M. Marganore. 2016. Low dose verapamil as an adjunct therapy for medically refractory epilepsy - An open label pilot study. *Epilepsy Res*. 126: 197–200. <https://doi.org/10.1016/j.eplepsyres.2016.07.004>
- Nardi, A., V. Calderone, S. Chericoni, and I. Morelli. 2003. Natural modulators of large-conductance calcium-activated potassium channels. *Planta Med*. 69:885–892. <https://doi.org/10.1055/s-2003-45095>
- Nelson, A.B., M. Faulstich, S. Moghadam, K. Onori, A. Meredith, and S. du Lac. 2017. BK Channels Are Required for Multisensory Plasticity in the Oculomotor System. *Neuron*. 93:211–220. <https://doi.org/10.1016/j.neuron.2016.11.019>
- Neyton, J., and C. Miller. 1988. Discrete Ba²⁺ block as a probe of ion occupancy and pore structure in the high-conductance Ca²⁺-activated K⁺ channel. *J. Gen. Physiol*. 92:569–586. <https://doi.org/10.1085/jgp.92.5.569>
- Olesen, S.P., E. Munch, P. Moldt, and J. Drejer. 1994a. Selective activation of Ca²⁺-dependent K⁺ channels by novel benzimidazolone. *Eur. J. Pharmacol*. 251:53–59. [https://doi.org/10.1016/0014-2999\(94\)90442-1](https://doi.org/10.1016/0014-2999(94)90442-1)
- Olesen, S.P., E. Munch, F. Wätjen, and J. Drejer. 1994b. NS 004—an activator of Ca²⁺-dependent K⁺ channels in cerebellar granule cells. *Neuroreport*. 5: 1001–1004. <https://doi.org/10.1097/00001756-199404000-00037>

- Ovsiew, F., K.J. Meador, and K. Sethi. 1998. Verapamil for severe hyperkinetic movement disorders. *Mov. Disord.* 13:341–344. <https://doi.org/10.1002/mds.870130224>
- Pacheco Otolara, L.F., E.F. Hernandez, M.F. Arshadmansab, S. Francisco, M. Willis, B. Ermolinsky, M. Zarei, H.G. Knaus, and E.R. Garrido-Sanabria. 2008. Down-regulation of BK channel expression in the pilocarpine model of temporal lobe epilepsy. *Brain Res.* 1200:116–131. <https://doi.org/10.1016/j.brainres.2008.01.017>
- Pallanck, L., and B. Ganetzky. 1994. Cloning and characterization of human and mouse homologs of the *Drosophila* calcium-activated potassium channel gene, *slowpoke*. *Hum. Mol. Genet.* 3:1239–1243. <https://doi.org/10.1093/hmg/3.8.1239>
- Pallotta, B.S., K.L. Magleby, and J.N. Barrett. 1981. Single channel recordings of Ca^{2+} -activated K^+ currents in rat muscle cell culture. *Nature.* 293:471–474. <https://doi.org/10.1038/293471a0>
- Petrik, D., B. Wang, and R. Brenner. 2011. Modulation by the BK accessory $\beta 4$ subunit of phosphorylation-dependent changes in excitability of dentate gyrus granule neurons. *Eur. J. Neurosci.* 34:695–704. <https://doi.org/10.1111/j.1460-9568.2011.07799.x>
- Pietrzykowski, A.Z., R.M. Friesen, G.E. Martin, S.I. Puig, C.L. Nowak, P.M. Wynne, H.T. Siegelmann, and S.N. Treistman. 2008. Posttranscriptional regulation of BK channel splice variant stability by miR-9 underlies neuroadaptation to alcohol. *Neuron.* 59:274–287. <https://doi.org/10.1016/j.neuron.2008.05.032>
- Plante, A.E., H.J. Moldenhauer, J.R.M. Harvey, and A.L. Meredith. 2019. Gain-of-Function Effects of KCNMA1-N999S Mutation on Human BK Channel Properties, in: *63rd Annual Meeting of the Biophysical Society*.
- Pourmasoumi, M., N. Vosoughi, S.M. Derakhshandeh-Rishehri, M. Assaroudi, and M. Heidari-Beni. 2018. Association of Omega-3 Fatty Acid and Epileptic Seizure in Epileptic Patients: A Systematic Review. *Int. J. Prev. Med.* 9:36. https://doi.org/10.4103/ijpvm.IJPVM_281_16
- Pulst, S.M. 1999. Genetic linkage analysis. *Arch. Neurol.* 56:667–672. <https://doi.org/10.1001/archneur.56.6.667>
- Pyott, S.J., and R.K. Duncan. 2016. BK Channels in the Vertebrate Inner Ear. *Int. Rev. Neurobiol.* 128:369–399. <https://doi.org/10.1016/bs.irm.2016.03.016>
- Pyott, S.J., A.L. Meredith, A.A. Fodor, A.E. Vázquez, E.N. Yamoah, and R.W. Aldrich. 2007. Cochlear function in mice lacking the BK channel alpha, beta1, or beta4 subunits. *J. Biol. Chem.* 282:3312–3324. <https://doi.org/10.1074/jbc.M608726200>
- Raffaelli, G., C. Saviane, M.H. Mohajerani, P. Pedarzani, and E. Cherubini. 2004. BK potassium channels control transmitter release at CA3-CA3 synapses in the rat hippocampus. *J. Physiol.* 557:147–157. <https://doi.org/10.1113/jphysiol.2004.062661>
- Rieg, T., V. Vallon, M. Sausbier, U. Sausbier, B. Kaissling, P. Ruth, and H. Osswald. 2007. The role of the BK channel in potassium homeostasis and flow-induced renal potassium excretion. *Kidney Int.* 72:566–573. <https://doi.org/10.1038/sj.ki.5002369>
- Robitaille, R., E.M. Adler, and M.P. Charlton. 1993. Calcium channels and calcium-gated potassium channels at the frog neuromuscular junction. *J. Physiol. Paris.* 87:15–24. [https://doi.org/10.1016/0928-4257\(93\)90020-T](https://doi.org/10.1016/0928-4257(93)90020-T)
- Rohmann, K.N., E. Wersinger, J.P. Braude, S.J. Pyott, and P.A. Fuchs. 2015. Activation of BK and SK channels by efferent synapses on outer hair cells in high-frequency regions of the rodent cochlea. *J. Neurosci.* 35:1821–1830. <https://doi.org/10.1523/JNEUROSCI.2790-14.2015>
- Roy, S., A. Morayo Akande, R.J. Large, T.I. Webb, C. Camarasu, G.P. Sergeant, N.G. McHale, K.D. Thornbury, and M.A. Hollywood. 2012. Structure-activity relationships of a novel group of large-conductance Ca^{2+} -activated K^+ (BK) channel modulators: the GoSlo-SR family. *ChemMedChem.* 7:1763–1769. <https://doi.org/10.1002/cmdc.201200321>
- Sausbier, M., H. Hu, C. Arntz, S. Feil, S. Kamm, H. Adelsberger, U. Sausbier, C.A. Sailer, R. Feil, F. Hofmann, et al. 2004. Cerebellar ataxia and Purkinje cell dysfunction caused by Ca^{2+} -activated K^+ channel deficiency. *Proc. Natl. Acad. Sci. USA.* 101:9474–9478. <https://doi.org/10.1073/pnas.0401702101>
- Sausbier, M., C. Arntz, I. Bucurenciu, H. Zhao, X.B. Zhou, U. Sausbier, S. Feil, S. Kamm, K. Essin, C.A. Sailer, et al. 2005. Elevated blood pressure linked to primary hyperaldosteronism and impaired vasodilation in BK channel-deficient mice. *Circulation.* 112:60–68. <https://doi.org/10.1161/01.CIR.0000156448.74296.FE>
- Sausbier, M., J.E. Matos, U. Sausbier, G. Beranek, C. Arntz, W. Neuhuber, P. Ruth, and J. Leipziger. 2006a. Distal colonic K^+ secretion occurs via BK channels. *J. Am. Soc. Nephrol.* 17:1275–1282. <https://doi.org/10.1681/ASN.2005101111>
- Sausbier, M., X.B. Zhou, C. Beier, U. Sausbier, D. Wolpers, S. Maget, C. Martin, A. Dietrich, A.R. Ressmeyer, H. Renz, et al. 2007. Reduced rather than enhanced cholinergic airway constriction in mice with ablation of the large conductance Ca^{2+} -activated K^+ channel. *FASEB J.* 21:812–822. <https://doi.org/10.1096/fj.06-7167.com>
- Sausbier, U., M. Sausbier, C.A. Sailer, C. Arntz, H.G. Knaus, W. Neuhuber, and P. Ruth. 2006b. Ca^{2+} -activated K^+ channels of the BK-type in the mouse brain. *Histochem. Cell Biol.* 125:725–741. <https://doi.org/10.1007/s00418-005-0124-7>
- Sausbier, U., C. Dullin, J. Missbach-Guentner, C. Kabagema, K. Flockerkzie, G.M. Kuscher, W. Stuehmer, W. Neuhuber, P. Ruth, F. Alves, and M. Sausbier. 2011. Osteopenia due to enhanced cathepsin K release by BK channel ablation in osteoclasts. *PLoS One.* 6:e21168. <https://doi.org/10.1371/journal.pone.0021168>
- Savina, T.A., S.G. Levin, I.I. Poletaeva, I.B. Fedotova, and T.G. Shchipakina. 2014. Audiogenic kindling changes the subunit composition of BK-channels in dentate gyrus of Krushinskii-Moldoklina rats. *Biochemistry (Moscow). Supplement Series A: Membrane and Cell Biology.* 8:111–115.
- Schuckit, M.A., K. Wilhelmsen, T.L. Smith, H.S. Feiler, P. Lind, L.A. Lange, and J. Kalmijn. 2005. Autosomal linkage analysis for the level of response to alcohol. *Alcohol. Clin. Exp. Res.* 29:1976–1982. <https://doi.org/10.1097/01.alc.0000187598.82921.27>
- Shao, L.R., R. Halvorsrud, L. Borg-Graham, and J.F. Storm. 1999. The role of BK-type Ca^{2+} -dependent K^+ channels in spike broadening during repetitive firing in rat hippocampal pyramidal cells. *J. Physiol.* 521:135–146. <https://doi.org/10.1111/j.1469-7793.1999.00135.x>
- Sheehan, J.J., B.L. Benedetti, and A.L. Barth. 2009. Anticonvulsant effects of the BK-channel antagonist paxilline. *Epilepsia.* 50:711–720. <https://doi.org/10.1111/j.1528-1167.2008.01888.x>
- Shruti, S., R.L. Clem, and A.L. Barth. 2008. A seizure-induced gain-of-function in BK channels is associated with elevated firing activity in neocortical pyramidal neurons. *Neurobiol. Dis.* 30:323–330. <https://doi.org/10.1016/j.nbd.2008.02.002>
- Silveira-Moriyama, L., S. Kovac, M.A. Kurian, H. Houlden, A.J. Lees, M.C. Walker, E. Roze, A.R. Paciorek, J.W. Mink, and T.T. Warner. 2018. Phenotypes, genotypes, and the management of paroxysmal movement disorders. *Dev. Med. Child Neurol.* 60:559–565. <https://doi.org/10.1111/dmnc.13744>
- Soder, R.P., and G.V. Petkov. 2011. Large conductance Ca^{2+} -activated K^+ channel activation with NS1619 decreases myogenic and neurogenic contractions of rat detrusor smooth muscle. *Eur. J. Pharmacol.* 670:252–259. <https://doi.org/10.1016/j.ejphar.2011.08.013>
- Solaro, C.R., M. Prakriya, J.P. Ding, and C.J. Lingle. 1995. Inactivating and noninactivating Ca^{2+} - and voltage-dependent K^+ current in rat adrenal chromaffin cells. *J. Neurosci.* 15:6110–6123. <https://doi.org/10.1523/JNEUROSCI.15-09-06110.1995>
- Sørensen, M.V., J.E. Matos, M. Sausbier, U. Sausbier, P. Ruth, H.A. Praetorius, and J. Leipziger. 2008. Aldosterone increases $\text{K}_{\text{Ca}1.1}$ (BK) channel-mediated colonic K^+ secretion. *J. Physiol.* 586:4251–4264. <https://doi.org/10.1113/jphysiol.2008.156968>
- Spektor, M., R. Rodriguez, R.S. Rosenbaum, H.Z. Wang, A. Melman, and G.J. Christ. 2002. Potassium channels and human corporeal smooth muscle cell tone: further evidence of the physiological relevance of the Maxi-K channel subtype to the regulation of human corporeal smooth muscle tone in vitro. *J. Urol.* 167:2628–2635. [https://doi.org/10.1016/S0022-5347\(05\)65049-5](https://doi.org/10.1016/S0022-5347(05)65049-5)
- Sprossmann, F., P. Pankert, U. Sausbier, A. Wirth, X.B. Zhou, J. Madlung, H. Zhao, I. Bucurenciu, A. Jakob, T. Lamkemeyer, et al. 2009. Inducible knockout mutagenesis reveals compensatory mechanisms elicited by constitutive BK channel deficiency in overactive murine bladder. *FEBS J.* 276:1680–1697. <https://doi.org/10.1111/j.1742-4658.2009.06900.x>
- Staisch, J., X. Du, J. Carvalho-De-Souza, T. Kubota, F. Bezanilla, and C. Gomez. 2016. A Mutation Causing Reduced BK Channel Activity Leads to Cognitive Impairment and Progressive Cerebellar Ataxia. *Neurology.* 86:P5.394.
- Stefani, E., M. Ottolia, F. Noceti, R. Olcese, M. Wallner, R. Latorre, and L. Toro. 1997. Voltage-controlled gating in a large conductance Ca^{2+} -sensitive K^+ channel (hsl). *Proc. Natl. Acad. Sci. USA.* 94:5427–5431. <https://doi.org/10.1073/pnas.94.10.5427>
- Steinlein, O.K. 2008. Genetics and epilepsy. *Dialogues Clin. Neurosci.* 10:29–38.
- Storm, J.F. 1987. Action potential repolarization and a fast after-hyperpolarization in rat hippocampal pyramidal cells. *J. Physiol.* 385:733–759. <https://doi.org/10.1113/jphysiol.1987.sp016517>
- Stummgen, T.C., J.H. Poulsen, A. Hay-Schmidt, M. Grunnet, D.A. Klaerke, H.B. Rasmussen, S.P. Olesen, and N.K. Jorgensen. 2003. Pharmacological

- investigation of the role of ion channels in salivary secretion. *Pflugers Arch.* 446:78–87. <https://doi.org/10.1007/s00424-002-0985-8>
- Tabarki, B., N. AlMajhad, A. AlHashem, R. Shaheen, and F.S. Alkuraya. 2016. Homozygous KCNMA1 mutation as a cause of cerebellar atrophy, developmental delay and seizures. *Hum. Genet.* 135:1295–1298. <https://doi.org/10.1007/s00439-016-1726-y>
- Tang, X.D., R. Xu, M.F. Reynolds, M.L. Garcia, S.H. Heinemann, and T. Hoshi. 2003. Haem can bind to and inhibit mammalian calcium-dependent Slo1 BK channels. *Nature.* 425:531–535. <https://doi.org/10.1038/nature02003>
- Tanimoto, N., V. Sotherlingam, T. Euler, P. Ruth, M.W. Seeliger, and T. Schubert. 2012. BK channels mediate pathway-specific modulation of visual signals in the in vivo mouse retina. *J. Neurosci.* 32:4861–4866. <https://doi.org/10.1523/JNEUROSCI.4654-11.2012>
- Tanner, M.R., and C. Beeton. 2018. Differences in ion channel phenotype and function between humans and animal models. *Front. Biosci.* 23:43–64. <https://doi.org/10.2741/4581>
- Thieme, H., F. Stumpff, A. Ottlecz, C.L. Percicot, G.N. Lambrou, and M. Wiederholt. 2001. Mechanisms of action of unoprostone on trabecular meshwork contractility. *Invest. Ophthalmol. Vis. Sci.* 42:3193–3201.
- Thorneloe, K.S., A.L. Meredith, A.M. Knorn, R.W. Aldrich, and M.T. Nelson. 2005. Urodynamic properties and neurotransmitter dependence of urinary bladder contractility in the BK channel deletion model of overactive bladder. *Am. J. Physiol. Renal Physiol.* 289:F604–F610. <https://doi.org/10.1152/ajprenal.00060.2005>
- Tomás, M., E. Vázquez, J.M. Fernández-Fernández, I. Subirana, C. Plata, M. Heras, J. Vila, J. Marrugat, M.A. Valverde, and M. Sentí. 2008. Genetic variation in the KCNMA1 potassium channel alpha subunit as risk factor for severe essential hypertension and myocardial infarction. *J. Hypertens.* 26:2147–2153. <https://doi.org/10.1097/HJH.0b013e32831103d8>
- Trépanier, M.O., J. Lim, T.K. Lai, H.J. Cho, A.F. Domenichiello, C.T. Chen, A.Y. Taha, R.P. Bazinet, and W.M. Burnham. 2014. Intraperitoneal administration of docosahexaenoic acid for 14 days increases serum unesterified DHA and seizure latency in the maximal pentylentetrazol model. *Epilepsy Behav.* 33:138–143. <https://doi.org/10.1016/j.yebeh.2014.02.020>
- Tricarico, D., and A. Mele. 2017. Commentary: A BK (Slo1) channel journey from molecule to physiology. *Front. Pharmacol.* 8:188. <https://doi.org/10.3389/fphar.2017.00188>
- Tricarico, D., M. Barbieri, A. Mele, G. Carbonara, and D.C. Camerino. 2004. Carbonic anhydrase inhibitors are specific openers of skeletal muscle BK channel of K⁺-deficient rats. *FASEB J.* 18:760–761. <https://doi.org/10.1096/fj.03-0722fj>
- Typlt, M., M. Mirkowski, E. Azzopardi, L. Ruettiger, P. Ruth, and S. Schmid. 2013a. Mice with deficient BK channel function show impaired prepulse inhibition and spatial learning, but normal working and spatial reference memory. *PLoS One.* 8:e81270. <https://doi.org/10.1371/journal.pone.0081270>
- Typlt, M., M. Mirkowski, E. Azzopardi, P. Ruth, P.K. Pilz, and S. Schmid. 2013b. Habituation of reflexive and motivated behavior in mice with deficient BK channel function. *Front. Integr. Neurosci.* 7:79. <https://doi.org/10.3389/fnint.2013.00079>
- Uhlén, M., L. Fagerberg, B.M. Hallström, C. Lindskog, P. Oksvold, A. Martinoglou, Å. Sivertsson, C. Kampf, E. Sjöstedt, A. Asplund, et al. 2015. Proteomics. Tissue-based map of the human proteome. *Science.* 347:1260419. <https://doi.org/10.1126/science.1260419>
- Unterberger, I., and E. Trinka. 2008. Diagnosis and treatment of paroxysmal dyskinesias revisited. *Ther. Adv. Neurol. Disorder.* 1:4–11.
- Valverde, M.A., P. Rojas, J. Amigo, D. Cosmelli, P. Orio, M.I. Bahamonde, G.E. Mann, C. Vergara, and R. Latorre. 1999. Acute activation of Maxi-K channels (hSlo) by estradiol binding to the beta subunit. *Science.* 285:1929–1931. <https://doi.org/10.1126/science.285.5435.1929>
- Vang, A., J. Mazer, B. Casserly, and G. Choudhary. 2010. Activation of endothelial BK_{Ca} channels causes pulmonary vasodilation. *Vascul. Pharmacol.* 53:122–129. <https://doi.org/10.1016/j.vph.2010.05.001>
- Van Goor, F., Y.X. Li, and S.S. Stojilkovic. 2001. Paradoxical role of large-conductance calcium-activated K⁺ (BK) channels in controlling action potential-driven Ca²⁺ entry in anterior pituitary cells. *J. Neurosci.* 21:5902–5915. <https://doi.org/10.1523/JNEUROSCI.21-16-05902.2001>
- Wallner, M., P. Meera, and L. Toro. 1996. Determinant for beta-subunit regulation in high-conductance voltage-activated and Ca²⁺-sensitive K⁺ channels: an additional transmembrane region at the N terminus. *Proc. Natl. Acad. Sci. USA.* 93:14922–14927. <https://doi.org/10.1073/pnas.93.25.14922>
- Wang, L., and F.J. Sigworth. 2009. Structure of the BK potassium channel in a lipid membrane from electron cryomicroscopy. *Nature.* 461:292–295. <https://doi.org/10.1038/nature08291>
- Wang, B., B.S. Rothberg, and R. Brenner. 2009. Mechanism of increased BK channel activation from a channel mutation that causes epilepsy. *J. Gen. Physiol.* 133:283–294. <https://doi.org/10.1085/jgp.200810141>
- Wang, B., D.B. Jaffe, and R. Brenner. 2014. Current understanding of iberitoxin-resistant BK channels in the nervous system. *Front. Physiol.* 5:382. <https://doi.org/10.3389/fphys.2014.00382>
- Wang, B., V. Bugay, L. Ling, H.H. Chuang, D.B. Jaffe, and R. Brenner. 2016. Knockout of the BK β4-subunit promotes a functional coupling of BK channels and ryanodine receptors that mediate a fAHP-induced increase in excitability. *J. Neurophysiol.* 116:456–465. <https://doi.org/10.1152/jn.00857.2015>
- Wang, J., S. Yu, Q. Zhang, Y. Chen, X. Bao, and X. Wu. 2017. KCNMA1 mutation in children with paroxysmal dyskinesia and epilepsy: Case report and literature review. *Transl. Sci. Rare Dis.* 2:8.
- Wang, Y.J., M.W. Lin, A.A. Lin, and S.N. Wu. 2008. Riluzole-induced block of voltage-gated Na⁺ current and activation of BK_{Ca} channels in cultured differentiated human skeletal muscle cells. *Life Sci.* 82:11–20. <https://doi.org/10.1016/j.lfs.2007.10.015>
- Wanner, S.G., R.O. Koch, A. Koschak, M. Trieb, M.L. Garcia, G.J. Kaczorowski, and H.G. Knaus. 1999. High-conductance calcium-activated potassium channels in rat brain: pharmacology, distribution, and subunit composition. *Biochemistry.* 38:5392–5400. <https://doi.org/10.1021/bi983040c>
- Werner, M.E., P. Zvara, A.L. Meredith, R.W. Aldrich, and M.T. Nelson. 2005. Erectile dysfunction in mice lacking the large-conductance calcium-activated potassium (BK) channel. *J. Physiol.* 567:545–556. <https://doi.org/10.1113/jphysiol.2005.093823>
- Werner, M.E., A.L. Meredith, R.W. Aldrich, and M.T. Nelson. 2008. Hypercontractility and impaired sildenafil relaxations in the BK_{Ca} channel deletion model of erectile dysfunction. *Am. J. Physiol. Regul. Integr. Comp. Physiol.* 295:R181–R188. <https://doi.org/10.1152/ajp Regul.00173.2008>
- White, R.S., B.G. Zemen, Z. Khan, J.R. Montgomery, G.M. Herrera, and A.L. Meredith. 2015. Evaluation of mouse urinary bladder smooth muscle for diurnal differences in contractile properties. *Front. Pharmacol.* 5:293. <https://doi.org/10.3389/fphar.2014.00293>
- Whitmire, L.E., L. Ling, V. Bugay, C.M. Carver, S. Timilsina, H.H. Chuang, D.B. Jaffe, M.S. Shapiro, J.E. Cavazos, and R. Brenner. 2017. Downregulation of KCNMB4 expression and changes in BK channel subtype in hippocampal granule neurons following seizure activity. *PLoS One.* 12:e0188064. <https://doi.org/10.1371/journal.pone.0188064>
- Whitt, J.P., J.R. Montgomery, and A.L. Meredith. 2016. BK channel inactivation gates daytime excitability in the circadian clock. *Nat. Commun.* 7:10837. <https://doi.org/10.1038/ncomms10837>
- Whitt, J.P., B.A. McNally, and A.L. Meredith. 2018. Differential contribution of Ca²⁺ sources to day and night BK current activation in the circadian clock. *J. Gen. Physiol.* 150:259–275. <https://doi.org/10.1085/jgp.201711945>
- Womack, M.D., C. Hoang, and K. Khodakhah. 2009. Large conductance calcium-activated potassium channels affect both spontaneous firing and intracellular calcium concentration in cerebellar Purkinje neurons. *Neuroscience.* 162:989–1000. <https://doi.org/10.1016/j.neuroscience.2009.05.016>
- Wykes, R.C., and G. Lignani. 2018. Gene therapy and editing: Novel potential treatments for neuronal channelopathies. *Neuropharmacology.* 132:108–117. <https://doi.org/10.1016/j.neuropharm.2017.05.029>
- Xia, X.M., X. Zeng, and C.J. Lingle. 2002. Multiple regulatory sites in large-conductance calcium-activated potassium channels. *Nature.* 418:880–884. <https://doi.org/10.1038/nature00956>
- Yan, J., and R.W. Aldrich. 2010. LRRC26 auxiliary protein allows BK channel activation at resting voltage without calcium. *Nature.* 466:513–516. <https://doi.org/10.1038/nature09162>
- Yan, J., and R.W. Aldrich. 2012. BK potassium channel modulation by leucine-rich repeat-containing proteins. *Proc. Natl. Acad. Sci. USA.* 109:7917–7922. <https://doi.org/10.1073/pnas.1205435109>
- Yang, H., G. Zhang, and J. Cui. 2015. BK channels: multiple sensors, one activation gate. *Front. Physiol.* 6:29. <https://doi.org/10.3389/fphys.2015.00029>
- Yang, J., G. Krishnamoorthy, A. Saxena, G. Zhang, J. Shi, H. Yang, K. Delaloye, D. Sept, and J. Cui. 2010. An epilepsy/dyskinesia-associated mutation enhances BK channel activation by potentiating Ca²⁺ sensing. *Neuron.* 66:871–883. <https://doi.org/10.1016/j.neuron.2010.05.009>

- Yang, Y., P.Y. Li, J. Cheng, L. Mao, J. Wen, X.Q. Tan, Z.F. Liu, and X.R. Zeng. 2013. Function of BK_{Ca} channels is reduced in human vascular smooth muscle cells from Han Chinese patients with hypertension. *Hypertension*. 61:519–525. <https://doi.org/10.1161/HYPERTENSIONAHA.111.00211>
- Yeşil, G., A. Aralaşmak, E. Akyüz, D. İçağasioğlu, T. Uygur Şahin, and Y. Bayram. 2018. Expanding the Phenotype of Homozygous KCNMA1 Mutations; Dyskinesia, Epilepsy, Intellectual Disability, Cerebellar and Corticospinal Tract Atrophy. *Balkan Med. J.* 35:336–339. <https://doi.org/10.4274/balkanmedj.2017.0986>
- Yuan, P., M.D. Leonetti, A.R. Pico, Y. Hsiung, and R. MacKinnon. 2010. Structure of the human BK channel Ca²⁺-activation apparatus at 3.0 Å resolution. *Science*. 329:182–186. <https://doi.org/10.1126/science.1190414>
- Yuan, P., M.D. Leonetti, Y. Hsiung, and R. MacKinnon. 2011. Open structure of the Ca²⁺ gating ring in the high-conductance Ca²⁺-activated K⁺ channel. *Nature*. 481:94–97. <https://doi.org/10.1038/nature10670>
- Yue, F., Y. Cheng, A. Breschi, J. Vierstra, W. Wu, T. Ryba, R. Sandstrom, Z. Ma, C. Davis, B.D. Pope, et al. Mouse ENCODE Consortium. 2014. A comparative encyclopedia of DNA elements in the mouse genome. *Nature*. 515:355–364. <https://doi.org/10.1038/nature13992>
- Zhang, X.L., and M.S. Gold. 2009. Dihydropyridine block of voltage-dependent K⁺ currents in rat dorsal root ganglion neurons. *Neuroscience*. 161:184–194. <https://doi.org/10.1016/j.neuroscience.2009.03.012>
- Zhang, G., S.Y. Huang, J. Yang, J. Shi, X. Yang, A. Moller, X. Zou, and J. Cui. 2010. Ion sensing in the RCK1 domain of BK channels. *Proc. Natl. Acad. Sci. USA*. 107:18700–18705. <https://doi.org/10.1073/pnas.1010124107>
- Zhang, Z.B., M.Q. Tian, K. Gao, Y.W. Jiang, and Y. Wu. 2015. *De novo* KCNMA1 mutations in children with early-onset paroxysmal dyskinesia and developmental delay. *Mov. Disord.* 30:1290–1292. <https://doi.org/10.1002/mds.26216>

Supplemental material

Bailey et al., <https://doi.org/10.1085/jgp.201912457>

Table S1. Missense SNPs and mutations in the *KCNMA1* gene reported by population sequencing databases

Database	Missense SNPs	Mutations
<i>ClinVar</i>	46	7/16 - G354S, G375R (rs1554829003), D434G (rs137853333), Y676Lfs*7 (rs762705295), E884K (rs1554966197), N995S/N999S/N1053S (rs886039469), N1159S (rs563967757)
<i>ExAC</i>	253	2/16 - Y676Lfs*7 (rs762705295), N1159S (rs563967757)
<i>gnomAD</i>	311	7/16 - D434G (rs137853333), K518N (rs770007121), E656A (rs149000684), Y676Lfs*7 (rs762705295), E884K (rs1554966197), N995S/N999S/N1053S (rs886039469), N1159S (rs563967757)

The number of missense SNPs and mutations in the *KCNMA1* gene reported by three population sequencing databases differs (Lek et al., 2016; Landrum et al., 2018). The denominator of 16 in the mutation column reflects the total number of mutations identified in symptomatic patients reported in this review. No reference SNP cluster ID was reported for G354S. *ClinVar* (<https://www.ncbi.nlm.nih.gov/clinvar/>); *ExAC* Exome Aggregation Consortium (<http://exac.broadinstitute.org>); *gnomAD* Genome Aggregation Database (<https://gnomad.broadinstitute.org>). The authors acknowledge the Genome Aggregation Database (*gnomAD*), Exome Aggregation Consortium, and the groups that provided exome and genome variant data to these resources. A full list of contributing groups can be found at <https://gnomad.broadinstitute.org/about> and <http://exac.broadinstitute.org/about>.

Table S2. **Neurological gene panels which include the *KCNMA1* gene**

Gene panel name and lab	Genes	Methods
All Neuro panel; Centogene AG - the Rare Disease Company, Germany	1,205	Sequence analysis of the entire coding region
Generalized epilepsy and paroxysmal dyskinesia; Centogene AG - the Rare Disease Company, Germany	1	Deletion/duplication analysis; sequence analysis of the entire coding region
Childhood Epilepsy; Amplexa Genetics, Amplexa Genetics A/S, Denmark	125	Mutation scanning of the entire coding region
Epilepsy, Intellectual Disability, and Autism Spectrum Disorder; Amplexa Genetics, Amplexa Genetics A/S, Denmark	569	Mutation scanning of the entire coding region
Epilepsy and Seizure Plus Sequencing Panel with CNV Detection; Prevention Genetics, US	222	Deletion/duplication analysis; sequence analysis of the entire coding region; targeted variant analysis
Childhood Epilepsy NGS Panel; Fulgent Genetics, US	209	Deletion/duplication analysis; sequence analysis of the entire coding region
Neonatal Epilepsy NGS Panel; Fulgent Genetics, US	275	Deletion/duplication analysis; sequence analysis of the entire coding region
Epilepsy Advanced Sequencing and CNV Evaluation; Athena Diagnostics Inc, US	234	Deletion/duplication analysis; sequence analysis of the entire coding region
Epilepsy Advanced Sequencing and CNV Evaluation - Generalized, Absence, Focal, Febrile and Myoclonic Epilepsies; Athena Diagnostics Inc, US	84	Deletion/duplication analysis; sequence analysis of the entire coding region
Epilepsy and Seizure Disorders: Deletion/Duplication Panel; EGL Genetic Diagnostics Eurofins Clinical Diagnostics, US	107	Deletion/duplication analysis
Neurogenetic Disorders – panels; MGZ Medical Genetics Center, Germany	597	Deletion/duplication analysis; sequence analysis of the entire coding region
Epilepsy/Seizure; Knight Diagnostic Laboratories - Molecular Diagnostic Center Oregon Health & Science University, US	98	Sequence analysis of the entire coding region
Epilepsy; Asper Biogene Asper Biogene LLC, Estonia	175	Deletion/duplication analysis; sequence analysis of the entire coding region
Epilepsy Comprehensive NGS Panel; Fulgent Genetics, US	398	Deletion/duplication analysis; sequence analysis of the entire coding region
Epilepsy Hereditary Panel; GENETAQ Molecular Genetics Centre and Diagnosis of Rare Diseases, Spain	37	Sequence analysis of the entire coding region
Dystonia; Asper Biogene Asper Biogene LLC, Estonia	38	Deletion/duplication analysis; sequence analysis of the entire coding region
Autism Spectrum Disorders 53-Gene Panel; Center for Human Genetics, Inc, US	53	Sequence analysis of the entire coding region
Dystonia (NGS panel for 43 genes); CGC Genetics, Portugal	43	Sequence analysis of the entire coding region
Single gene testing <i>KCNMA1</i>; CeGaT GmbH, Germany	1	Sequence analysis of the entire coding region
Generalized epilepsy and paroxysmal dyskinesia (sequence analysis of <i>KCNMA1</i> gene); CGC Genetics, Portugal	1	Sequence analysis of the entire coding region
Dystonia All Panel; CeGaT GmbH, Germany	54	Sequence analysis of the entire coding region
Paroxysmal Movement Disorders Panel; CeGaT GmbH, Germany	4	Sequence analysis of the entire coding region
Paroxysmal Dyskinesia Panel; CeGaT GmbH, Germany	6	Sequence analysis of the entire coding region
Idiopathic Generalized and Focal Epilepsy Panel; CeGaT GmbH, Germany	40	Sequence analysis of the entire coding region
<i>KCNMA1</i> Single Gene; Fulgent Genetics, US	1	Deletion/duplication analysis; sequence analysis of the entire coding region
Neurology: Sequencing Panel; EGL Genetic Diagnostics Eurofins Clinical Diagnostics, US	164	Sequence analysis of the entire coding region
Epilepsy and Seizure Disorders: Sequencing Panel; EGL Genetic Diagnostics Eurofins Clinical Diagnostics, US	110	Sequence analysis of the entire coding region
Clinical Exome; Fulgent Genetics, US	4,673	Deletion/duplication analysis; sequence analysis of the entire coding region
Epilepsy with paroxysmal disorders panel; Genome Diagnostics Laboratory University Medical Center, Utrecht, Netherlands	5	Sequence analysis of select exons; sequence analysis of the entire coding region

The 29 gene panels were identified using NCBI Genetic Testing Registry (GTR) database (<https://www.ncbi.nlm.nih.gov/gtr/>).

GOF Mutations

D434G

The D434 residue is located in the AC region of the RCK1 domain (Fig. 1), which contributes to the calcium gating of BK channels (Du et al., 2005). Patch-clamp recordings from Chinese hamster ovary (CHO) cells and *Xenopus laevis* oocytes expressing D434G channels demonstrated increased BK current. The increased current was primarily due to a three- to fivefold increase in Ca^{2+} sensitivity and faster activation compared to WT BK channels. The voltage of half-maximal activation ($V_{1/2}$) for D434G channels was shifted to more negative potentials by 26 mV and 56 mV at 0.1 and 2 μM Ca^{2+} , respectively. These experiments revealed that D434G makes the channels easier to open, and the mutation was identified as the first human GOF *KCNMA1* allele. The conclusions were confirmed in two independent studies that characterized the effect of D434G on BK/ $\beta 4$ channels and further probed the molecular mechanism behind the aspartate-to-glycine substitution (Wang et al., 2009; Yang et al., 2010). Several putative neurophysiological mechanisms consistent with either hyperexcitation in brain areas such as thalamocortical circuits and the basal ganglia, or disinhibition of GABAergic circuits, were hypothesized to explain the symptoms experienced by patients (Du et al., 2005), but the specific neuronal circuit alterations caused by the D434G mutation remain unknown.

N995S/N999S/N1053S

A second GOF mutation is reported in the literature using three different reference sequence numbering schemes but constitutes the same residue substitution (Fig. 1 and Table 1; Zhang et al., 2015; Wang et al., 2017; Li et al., 2018; Heim et al., 2019; Plante et al., 2019). In this review, this mutation will be referred to by the numbering scheme in the original publication for the data being discussed. Patch-clamp recordings from HEK293 cells expressing N995S or N999S channels exhibited increased BK current compared to WT (Li et al., 2018; Plante et al., 2019). This increased current was due to a >40-mV hyperpolarizing shift in the $V_{1/2}$ (Li et al., 2018; Plante et al., 2019). The mechanism of this shift was proposed to be independent of Ca^{2+} , as the N995S mutation increased BK current when the intracellular Ca^{2+} binding sites were mutated (Li et al., 2018). Additionally, activation of the mutant N995S (N999S) channels was faster and deactivation was slower than WT, correlated with increased mean open times in single channel recordings (Li et al., 2018; Plante et al., 2019). Interestingly, the GOF BK current phenotypes from N999S channels were found to exceed the GOF alterations produced by D434G (Plante et al., 2019), suggesting that the relative alterations in BK channel properties exhibited by distinct GOF mutations could influence the clinical heterogeneity among patients.

LOF mutations

Liang et al. (2019) reported nine unrelated patients affected by eight distinct *KCNMA1* mutations spanning from the pore domain to end of the intracellular C-terminal gating ring of the BK protein (Fig. 1). Five mutations abolished BK current in HEK293T patch-clamp recordings: S351Y and G356R in the pore domain, G375R in the S6 domain, N449fs* in the AC domain of RCK1, and I663V in the loop between RCK1 and RCK2, suggesting these mutations comprise LOF alleles of *KCNMA1* (Liang et al., 2019). Of these five mutations, only I663V was evaluated by western blot for protein expression levels. I663V channels had higher molecular weight compared to WT, but additional experiments would be needed to determine whether the size shift was due to changes in post translational modifications and how this relates to loss of BK current. The mechanisms for current abrogation of the other four mutations has not yet been addressed.

The other three mutations, C413Y, P805L, and D984N, reduced the mean amplitude of BK current compared to WT in patch clamp recordings, suggesting a mechanistically distinct LOF phenotype from the prior group. C413Y in the AC region of RCK1 and P805L located in the loop between S9 and S10 of the gating ring (Fig. 1) showed shifts in the $V_{1/2}$ values to more positive potentials, with a slope change suggestive of alterations in the voltage and Ca^{2+} sensitivity of the channels (Liang et al., 2019). Both mutations produced smaller current amplitudes compared to WT channels, and the expression level of P805L was decreased in western blot analysis. Interestingly, the patient harboring the C413Y mutation inherited this mutation from his asymptomatic mother, and the N449fs* from his asymptomatic father (Liang et al., 2019). This raises two possibilities, either that each mutation is akin to an autosomal recessive allele, or that co-expression with WT in the heterozygous parents may preclude a pathological phenotype. Finally, the mutation D984N located in the loop between S9 and S10 in RCK2 showed no shift in the $V_{1/2}$ at 10 μM Ca^{2+} . Other Ca^{2+} concentrations and expression levels were not evaluated, leaving the mechanism for this LOF mutation unresolved.

G354S

Voltage-clamp recordings from *Xenopus* oocytes expressing the G354S mutant BK channels demonstrated a 10-fold reduction in BK current due to slower activation kinetics (Carvalho-de-Souza et al., 2016).

R458Ter and Tyr676Lfs*7

These mutations were predicated to be LOF allele based on the early termination of the BK channel protein (Tabarki et al., 2016; Yeşil et al., 2018). Tyr676Lfs*7 is an autosomal recessive *KCNMA1* duplication mutation (Tabarki et al., 2016). Due to the retention of the tetramerization domain in the C-terminus of the channel, Tyr676Lfs*7 could potentially reduce current through a dominant negative action, but the functional properties for both mutations remains to be tested.

K518N, E656A, and N1159S

Patch-clamp recordings in HEK293 cells for each of these mutant channels showed no differences in activation kinetics or BK current density compared to WT BK channels suggesting they are benign genetic variants (no change in BK channel properties under the tested conditions) under the tested conditions (Li et al., 2018). Patients with these mutations exhibit a range of epilepsy phenotypes that is also observed among the *KCNMA1* patient population with pathogenic variants (Fig. 4).

E884K

The functional effect for this mutation has not been shown, making it a VUS. A VUS polymorphism is classified as a mutation by genetic testing, but for which there is not enough information to conclude its causative relationship to the patient symptoms. However, the patient shares similar symptoms to other GOF and LOF patients including PNKD, developmental delay, and visual impairment (Zhang et al., 2015), and pathogenicity prediction algorithms reported this mutation to be possibly deleterious.

References

- Carvalho-de-Souza, J., T. Kubota, X. Du, R. Latorre, C.M. Gomez, and F. Bezanilla. 2016. A Missense Mutation in the Selectivity Filter of BK Affects the Channel's Potassium Conductance. *Biophys. J.* 110:499a. <https://doi.org/10.1016/j.bpj.2015.11.2412>
- Du, W., J.F. Bautista, H. Yang, A. Diez-Sampedro, S.A. You, L. Wang, P. Kotagal, H.O. Lüders, J. Shi, J. Cui, et al. 2005. Calcium-sensitive potassium channelopathy in human epilepsy and paroxysmal movement disorder. *Nat. Genet.* 37:733–738. <https://doi.org/10.1038/ng1585>
- Heim, J., A. Vemuri, S. Lewis, A. Meredith, S. Keros, and M. Krüer. (2019). Drop attacks in patients with *KCNMA1* p.N999S heterozygous de novo mutations. *6th International Symposium on Paediatric Movement Disorders*.
- Karczewski, K.J., L.C. Francioli, G. Tiao, B.B. Cummings, J. Alfoldi, Q. Wang, R.L. Collins, K.M. Laricchia, A. Ganna, D.P. Birnbaum, et al. 2019. Variation across 141,456 human exomes and genomes reveals the spectrum of loss-of-function intolerance across human protein-coding genes. *bioRxiv*. <https://doi.org/10.1101/531210>
- Landrum, M.J., J.M. Lee, M. Benson, G.R. Brown, C. Chao, S. Chitipiralla, B. Gu, J. Hart, D. Hoffman, W. Jang, et al. 2018. ClinVar: improving access to variant interpretations and supporting evidence. *Nucleic Acids Res.* 46(D1):D1062–D1067. <https://doi.org/10.1093/nar/gkx1153>
- Lek, M., K.J. Karczewski, E.V. Minikel, K.E. Samocha, E. Banks, T. Fennell, A.H. O'Donnell-Luria, J.S. Ware, A.J. Hill, B.B. Cummings, et al. 2016. Analysis of protein-coding genetic variation in 60,706 humans. *Nature*. 536:285–291. <https://doi.org/10.1038/nature19057>
- Li, X., S. Poschmann, Q. Chen, W. Fazeli, N.J. Oundjian, F.M. Snoeijs-Schouwenaars, O. Fricke, E.J. Kamsteeg, M. Willemsen, and Q.K. Wang. 2018. De novo BK channel variant causes epilepsy by affecting voltage gating but not Ca²⁺ sensitivity. *Eur. J. Hum. Genet.* 26:220–229. <https://doi.org/10.1038/s41431-017-0073-3>
- Liang, L., X. Li, S. Moutton, S.A. Schrier Vergano, B. Cogne, A. De Saint-Martin, A.C.E. Hurst, Y. Hu, O. Bodamer, J. Thevenon, et al. 2019. De novo loss-of-function *KCNMA1* variants are associated with a new multiple malformation syndrome and a broad spectrum of developmental and neurological phenotypes. *Hum. Mol. Genet.* <https://doi.org/10.1093/hmg/ddz117>
- Plante, A.E., H.J. Moldenhauer, J.R.M. Harvey, and A.L. Meredith. 2019. Gain-of-Function Effects of *KCNMA1*-N999S Mutation on Human BK Channel Properties, in: *63rd Annual Meeting of the Biophysical Society*.
- Tabarki, B., N. AlMajhad, A. AlHashem, R. Shaheen, and F.S. Alkuraya. 2016. Homozygous *KCNMA1* mutation as a cause of cerebellar atrophy, developmental delay and seizures. *Hum. Genet.* 135:1295–1298. <https://doi.org/10.1007/s00439-016-1726-y>
- Wang, B., B.S. Rothberg, and R. Brenner. 2009. Mechanism of increased BK channel activation from a channel mutation that causes epilepsy. *J. Gen. Physiol.* 133: 283–294. <https://doi.org/10.1085/jgp.200810141>
- Wang, J., S. Yu, Q. Zhang, Y. Chen, X. Bao, and X. Wu. 2017. *KCNMA1* mutation in children with paroxysmal dyskinesia and epilepsy: Case report and literature review. *Transl. Sci. Rare Dis.* 2:8.
- Yang, J., G. Krishnamoorthy, A. Saxena, G. Zhang, J. Shi, H. Yang, K. Delaloye, D. Sept, and J. Cui. 2010. An epilepsy/dyskinesia-associated mutation enhances BK channel activation by potentiating Ca²⁺ sensing. *Neuron*. 66:871–883. <https://doi.org/10.1016/j.neuron.2010.05.009>
- Yeşil, G., A. Aralaşmak, E. Akyüz, D. İçağasioğlu, T. Uygur Şahin, and Y. Bayram. 2018. Expanding the Phenotype of Homozygous *KCNMA1* Mutations; Dyskinesia, Epilepsy, Intellectual Disability, Cerebellar and Corticospinal Tract Atrophy. *Balkan Med. J.* 35:336–339. <https://doi.org/10.4274/balkanmedj.2017.0986>
- Zhang, Z.B., M.Q. Tian, K. Gao, Y.W. Jiang, and Y. Wu. 2015. De novo *KCNMA1* mutations in children with early-onset paroxysmal dyskinesia and developmental delay. *Mov. Disord.* 30:1290–1292. <https://doi.org/10.1002/mds.26216>